

Companion Volume
Implementation Guide for
MAR Maritime
Training Package

Version 4.0



CONTENTS

OVERVIEW INFORMATION.....	1
Version control and modification history	1
Training Packages, the Australian Qualifications Framework, qualifications, Skill Sets, competency standards and units of competency	6
AQF qualifications, Skill Sets and units of competency in the Training Package.....	8
Qualification mapping information.....	14
Skill Sets mapping information	14
Unit of competency mapping information.....	14
Prerequisite and imported units	14
Key work and training requirements in the industry	15
Regulation and licensing implications for implementation	15
IMPLEMENTATION INFORMATION.....	16
Key features of the Training Package and the industry that will impact on the selection of training pathways	16
Industry sectors and occupational outcomes qualifications.....	16
Mandatory entry requirements for qualifications (where applicable).....	17
Pathways advice	17
Access and equity	18
Foundation Skills	19
Health and safety implications in the industry	19
Resources and equipment relevant to the Training Package	19
Legal considerations for learners in the workplace/on placements	19
Supporting learner transition between education sectors.....	20
Attachment A: Qualification mapping	21
Key: E = equivalent, N = not equivalent, NA = not applicable	21
Equivalent means outcomes of old and new qualifications are equivalent	21
MAR Maritime Training Package Version 3.0	22
Key: E = equivalent, N = not equivalent, NA = not applicable	22
Equivalent means outcomes of old and new qualifications are equivalent	22
MAR Maritime Training Package Version 2.0	24
MAR Maritime Training Package Version 1.0	25
Attachment B: Skill Sets mapping	27
MAR Maritime Training Package Version 4.0	27
MAR Maritime Training Package Version 2.0	27
MAR Maritime Training Package Version 1.0	28
Key: E = equivalent, N = not equivalent, NA = not applicable	28
Equivalent means outcomes of old and new units are equivalent	28
Attachment C: Units of competency mapping	29

MAR Maritime Training Package Version 4.0	29
Key: E = equivalent, N = not equivalent, NA = not applicable	29
Equivalent means outcomes of old and new units are equivalent	29
MAR Maritime Training Package Version 3.0	29
Key: E = equivalent, N = not equivalent, NA = not applicable	34
Equivalent means outcomes of old and new units are equivalent	34
MAR Maritime Training Package Version 2.0	36
MAR Maritime Training Package Version 1.1	44
MAR Maritime Training Package Version 1.0	45
Attachment D: Summary of Qualification Licensing/Regulatory Information	54
Attachment E: MAR Maritime Training Package Pathways Advice	58
Attachment F: CVIG Assurance Process	58
Attachment G: CVIG Template	60

OVERVIEW INFORMATION

This *Companion Volume Implementation Guide* is designed to assist assessors, trainers, Registered Training Organisations (RTOs) and enterprises in delivering the MAR Maritime Training Package. It provides advice about the structure of the Training Package and its key features.

Version control and modification history

Training Packages are not static documents; they are amended periodically to reflect the latest industry practices and are version controlled. It is essential that the latest version is always used.

In the version control and modification history table below, the latest information is provided first.

Version Number	Release Date	Comments
4.0	24 February 2016	<p>Three qualifications revised and transitioned to the Standards for Training Packages.</p> <p>Qualifications:</p> <p>MAR20116 Certificate II in Maritime Operations (Linesperson)</p> <p>MAR30116 Certificate III in Maritime Operations (Integrated Rating)</p> <p>MAR40116 Certificate IV in Maritime Operations (Chief Integrated Rating)</p> <p>Eighteen units of competency revised and transitioned to the Standards for Training Packages and five new units of competency:</p> <p>Units of competency:</p> <p>MARB016 Contribute to routine engine maintenance on a vessel</p> <p>MARB017 Perform routine maintenance and repairs on a vessel</p> <p>MARB018 Implement vessel planned maintenance system</p> <p>MARB019 Manage stores for planned maintenance system</p> <p>MARB025 Maintain mooring equipment</p> <p>MARB026 Apply knowledge of marine terminology and port procedures</p> <p>MARC022 Perform mooring and unmooring activities</p> <p>MARC027 Contribute to the operation of engine equipment and associated propulsion plant</p> <p>MARC028 Operate deck machinery, cargo handling gear and equipment on a vessel</p> <p>MARC029 Perform rigging on board a vessel</p> <p>MARC030 Use and care for hand and power</p>

	<p>3.0</p> <p>7 September 2015</p>	<p>tools</p> <p>MARC031 Shift mooring lines using mechanical means</p> <p>MARC032 Perform dogging on board a vessel</p> <p>MARE002 Communicate during mooring and unmooring activities</p> <p>MARF017 Follow work health and safety and emergency procedures during mooring and unmooring activities</p> <p>MARF018 Assist in an emergency response</p> <p>MARF019 Operate emergency equipment and apply emergency procedures</p> <p>MARF026 Follow port and terminal security procedures</p> <p>MARG005 Supervise a crew</p> <p>MARK005 Steer a vessel under direction of the Master</p> <p>MARN007 Use seamanship skills on board a vessel</p> <p>MARO005 Contribute to monitoring and controlling a safe engine watch</p> <p>MARO006 Contribute to monitoring and controlling a safe navigational watch</p> <p>Skill Sets:</p> <p>New Skill Sets for Tanker Familiarisation and dogging and Rigging:</p> <p>MARSS00015 Marine Dogging and Rigging Skill Set</p> <p>MARSS00016 Tanker Familiarisation Skill Set</p> <p>MARSS00017 Coxswains Grade 1 Skill Set</p> <p>MARSS00018 Marine Dogging Skill Set</p> <p>MARSS00019 Marine Rigging Skill Set</p> <p>ISC upgrade:</p> <p>Amendments to the following units of competency:</p> <p>MARB009 Manage refuelling</p> <p>MARF006 Observe personal safety and social responsibility</p> <p>MARF007 Operate survival craft and other lifesaving appliances</p> <p>MARF008 Prevent and fight fires on board a vessel</p> <p>MARJ001 Follow environmental work practices.</p> <p>Four qualifications transitioned to the <i>Standards for Training Packages</i> and one new qualification.</p>
--	------------------------------------	---

	<p>Qualifications:</p> <p>MAR30315 Certificate III in Marina Operations</p> <p>MAR30415 Certificate III in Maritime Operations (Marine Cookery)</p> <p>MAR50315 Diploma of Maritime Operations (Watchkeeper Deck)</p> <p>MAR50415 Diploma of Maritime Operations (Master up to 500 GT)</p> <p>MAR60315 Advanced Diploma of Maritime Operations (Master Unlimited)</p> <p>Twelve units of competency transitioned to the <i>Standards for Training Packages</i> and eight new units of competency.</p> <p>Units of competency:</p> <p>MARA009 Manage stability of a vessel 500 gross tonnage or more</p> <p>MARA010 Manage loading, unloading and stowage of cargo</p> <p>MARB020 Manage repairs and maintenance of a vessel 500 gross tonnage or more</p> <p>MARB021 Perform routine tasks in a marina</p> <p>MARB022 Refuel a vessel</p> <p>MARB023 Maintain marina infrastructure</p> <p>MARB024 Undertake basic boatyard operations</p> <p>MARC026 Operate remote controls of propulsion plant and engineering systems</p> <p>MARD003 Manage legal requirements of a vessel</p> <p>MARF020 Coordinate search and rescue operations</p> <p>MARF021 Manage safety and security of vessel crew and passengers</p> <p>MARF023 Apply safe work practices in a marina</p> <p>MARF024 Classify marina infrastructure, vessels and staffing structure</p> <p>MARF025 Respond to marina emergencies</p> <p>MARG006 Manage a vessel and its crew</p> <p>MARH011 Forecast weather and oceanographic conditions to plan a safe passage</p> <p>MARH012 Manage the navigation of a vessel 500 gross tonnage or more</p> <p>MARJ005 Manage compliance with environmental management legislation</p> <p>MARK006 Manoeuvre a vessel 500 gross tonnage or more</p>
--	---

	<p>MARN006 Manage cargo operations</p> <p>ISC upgrade:</p> <p>Amendments to the following units of competency:</p> <p>MARH004 Plan and navigate a passage for a vessel up to 80 metres</p> <p>MARH005 Use wheelhouse equipment for safe navigation</p> <p>MARJ002 Monitor environmental management on a vessel</p> <p>2.0 27 February 2015</p> <p>Seven qualifications transitioned to the <i>Standards for Training Packages</i>.</p> <p>Qualifications:</p> <ul style="list-style-type: none"> • MAR30115 Certificate III in Maritime Operations (Marine Engine Driver Steam) • MAR30215 Certificate III in Maritime Operations (Marine Surveying) • MAR40115 Certificate IV in Maritime Operations (Marine Surveying) • MAR50115 Diploma of Maritime Operations (Engineer Watchkeeper) • MAR50215 Diploma of Maritime Operations (Marine Surveying) • MAR60115 Advanced Diploma of Maritime Operations (Marine Engineering Class 2) • MAR60215 Advanced Diploma of Maritime Operations (Marine Engineering Class1) <p>Fifty units of competency transitioned to the <i>Standards for Training Packages</i> and two new units of competency.</p> <p>Units of competency:</p> <ul style="list-style-type: none"> • MARF022 Apply maritime resource management principles • MARL037 Demonstrate knowledge of ships and ship routines <p>New units for Radio Operator and Fast Rescue Craft:</p> <ul style="list-style-type: none"> • MARC019 Transmit and receive information by marine VHF radio within Australian Territorial Waters • MARC020 Transmit and receive information by marine radio • MARC021 Transmit and receive information by marine VHF radio • MARF016 Carry out fast rescue craft
--	---

		<p>operations</p> <p>New units for Offshore Familiarisation:</p> <ul style="list-style-type: none"> • MARA007 Contribute to safe cargo operations on offshore support vessels • MARA008 Contribute to safe anchor handling and towing operations <p>Skill Sets:</p> <p>New Skill Sets for Radio Operator and Fast Rescue Craft:</p> <ul style="list-style-type: none"> • MARSS00009 Australian Territorial Waters VHF Radio Operators • MARSS00010 Marine Radio Operators VHF and HF • MARSS00011 Marine Radio Operators VHF • MARSS00012 Fast Rescue Craft Operations <p>New Skill Sets for Offshore Familiarisation:</p> <ul style="list-style-type: none"> • MARSS00013 Cargo Handling Skill Set • MARSS00014 Anchor Handling and Cargo Operations Skill Set <p>ISC upgrade:</p> <p>Amendments to the following Skill Set::</p> <ul style="list-style-type: none"> • MARSS00008 Shipboard Safety Skill Set <p>Amendments to the following units of competency:</p> <ul style="list-style-type: none"> • MARB004 Perform routine maintenance on a vessel up to 24 metres • MARB006 Maintain marine internal combustion engines, propulsion plant and auxiliary systems • MARF001 Apply basic survival skills in the event of vessel abandonment • MARF002 Follow procedures to minimise and fight fires on board a vessel • MARF004 Meet work health and safety requirements • MARF005 Survive at sea using survival craft • MARK001 Handle a vessel up to 12 metres • MARO003 Transmit and receive information by the global maritime distress and safety system <p>1.1 3 December 2013 ISC upgrade</p> <p>Minor corrections to the following units of competency:</p> <ul style="list-style-type: none"> • MARA005 • MARC008 • MARC009 • MARC010 • MARC011
--	--	--

	<ul style="list-style-type: none"> • MARC018 <p>1.0 7 October 2013</p> <p>Primary release</p> <p>The MAR Maritime Training Package is the result of the near coastal material in the MAR13 Maritime Training Package being transitioned to the new Standards for Training Packages.</p> <p>The remaining material in the MAR13 Maritime Training package will be transitioned to the MAR Maritime Training Package over time.</p>
<p>Training Packages, the Australian Qualifications Framework, qualifications, Skill Sets, competency standards and units of competency</p>	<p>Training Packages</p> <p>Training Packages:</p> <ul style="list-style-type: none"> • specify the qualifications determined by regulatory requirements and industry groups to be most relevant for employment within the industry • are developed by national Industry Skills Councils in consultation with a range of stakeholders • are endorsed Nationally • enable nationally recognised qualifications to be awarded through direct assessment of workplace competencies • encourage the development and delivery of flexible training to suit individual needs and industry requirements • support learning, training and assessment in a work-related environment, leading to verifiable workplace outcomes. <p>Training and assessment using Training Packages must be conducted by a Registered Training Organisation (RTO) that has the qualification/s or specific unit/s of competency on its scope of registration.</p> <p>Australian Qualifications Framework</p> <p>The AQF provides a comprehensive, nationally consistent framework for all qualifications in post-compulsory education and training in Australia. In the vocational education and training (VET) sector the AQF enables national recognition of qualifications and Statements of Attainment.</p> <p>The MAR Maritime Training Package provides details of the units of competency that must be achieved to award AQF qualifications.</p> <p>The rules around which units of competency can be combined to make up a valid AQF qualification are referred to as the packaging rules. The packaging rules must be followed to ensure the integrity of nationally recognised qualifications issued.</p> <p>Qualification codes</p> <p>Each qualification has an eight-character code where the:</p> <ul style="list-style-type: none"> • first three characters identify the Training Package • first number identifies the AQF qualification level • second and third numbers identify a qualification’s position in the sequence of qualifications at that AQF qualification level • fourth and fifth numbers identify the year in which the qualification was endorsed. <p>For example, in MAR10313 Certificate I in Maritime Operations (General Purpose Hand Near Coastal):</p> <ul style="list-style-type: none"> • MAR indicates the qualification is in the Maritime Training Package • MAR1 indicates that the qualifications is a Certificate I

- MAR103 indicates that this qualification is the third qualification at Certificate I
- MAR10313 indicates the qualification was endorsed in 2013.

Skill Sets

Skill Sets are single units of competency or combinations of units of competency from an endorsed Training Package/s that link to a licensing or regulatory requirement or a defined industry need.

To be awarded a Skill Set a Statement of Attainment is issued.

Skill Set Codes

Each Skill Set has a code that is automatically issued by training.gov.au (TGA) where the:

- first three characters identify the Training Package
- next two characters indicate that it is a Skill Set
- numbers identify the Skill Set's position in the sequence of Skill Sets.

Competency Standards

The broad concept of industry competency is the ability to perform particular tasks and duties to the standard of performance expected in the workplace. Competency standards cover all aspects of workplace performance and involve:

- performing individual tasks
- managing a range of different tasks
- responding to contingencies or breakdowns
- dealing with the responsibilities of the workplace, including working with others.

Workplace competency is the ability to apply relevant skills and knowledge consistently over time and in the required workplace situations and environments.

Competency standards are determined by industry to meet industry skill needs and focus on what is expected of a competent individual in the workplace.

Units of Competency

Units of competency are nationally agreed statements about the skills and knowledge required for effective performance in the workplace. They outline work outcomes as defined by regulatory requirements and agreed by industry. As such, they identify the skills and knowledge (as outcomes) that contribute to the whole job function – they do not describe how to perform a particular role.

Each unit of competency covers a specific work activity, the range of conditions under which the activity is conducted and the foundation skills essential to performance.

The same unit of competency (i.e. specific work activity) can be relevant across a range of AQF qualification levels.

Units of Competency Codes

Each unit of competency has a specific character code where the:

- first three characters identify the Training Package
- next character/s indicates the competency field
- numbers identify a unit's position in the sequence of units in the competency field in the Training Package.

	<p>Assessment Requirements</p> <p>Each unit of competency has its own assessment requirements that identify the:</p> <ul style="list-style-type: none"> • performance evidence • knowledge evidence • assessment conditions.
<p>AQF qualifications, Skill Sets and units of competency in the Training Package</p>	<p>AQF Qualifications in the MAR Maritime Training Package</p> <p>The following AQF qualifications are in the MAR Maritime Training Package:</p> <ul style="list-style-type: none"> • MAR10313 Certificate I in Maritime Operations (General Purpose Hand Near Coastal) • MAR10413 Certificate I in Maritime Operations (Coxswain Grade 2 Near Coastal) • MAR20313 Certificate II in Maritime Operations (Coxswain Grade 1 Near Coastal) • MAR20413 Certificate II in Maritime Operations (Marine Engine Driver Grade 3 Near Coastal) • MAR20116 Certificate II in Maritime Operations (Linesperson) • MAR30115 Certificate III in Maritime Operations (Marine Engine Driver Steam) • MAR30215 Certificate III in Maritime Operations (Marine Surveying) • MAR30315 Certificate III in Marina Operations • MAR30415 Certificate III in Maritime Operations (Marine Cookery) • MAR30116 Certificate III in Maritime Operations (Integrated Rating) • MAR30813 Certificate III in Maritime Operations (Marine Engine Driver Grade 2 Near Coastal) • MAR30913 Certificate III in Maritime Operations (Master up to 24 metres Near Coastal) • MAR31013 Certificate III in Maritime Operations (Master Inland Waters) • MAR40115 Certificate IV in Maritime Operations (Marine Surveying) • MAR40116 Certificate IV in Maritime Operations (Chief Integrated Rating) • MAR40513 Certificate IV in Maritime Operations (Marine Engine Driver Grade 1 Near Coastal) • MAR40613 Certificate IV in Maritime Operations (Master up to 35 metres Near Coastal) • MAR50115 Diploma of Maritime Operations (Engineer Watchkeeper) • MAR50215 Diploma of Maritime Operations (Marine Surveying) • MAR50315 Diploma of Maritime Operations (Watchkeeper Deck) • MAR50415 Diploma of Maritime Operations (Master up to 500GT) • MAR50613 Diploma of Maritime Operations (Marine Engineering Class 3 Near Coastal) • MAR50713 Diploma of Maritime Operations (Master up to 80 metres Near Coastal) • MAR60115 Advanced Diploma of Maritime Operations (Marine Engineering Class 2) • MAR60215 Advanced Diploma of Maritime Operations (Marine Engineering Class1) • MAR60315 Advanced Diploma of Maritime Operations (Master Unlimited). <p>Skill Sets in the MAR Maritime Training Package</p> <p>The following Skill Sets are in the MAR Maritime Training Package:</p> <ul style="list-style-type: none"> • MARSS00004 Marine Emergency Care, Craft and Communication Skill Set • MARSS00005 Marine Engineering Class 3 Near Coastal Maintenance Skill Set

- MARSS00006 Marine Engineering Class 3 Near Coastal Shipboard Safety Skill Set
- MARSS00007 Safety Training Certification Skill Set
- MARSS00008 Shipboard Safety Skill Set
- MARSS00009 Australian Territorial Waters VHF Radio Operator's Skill Set
- MARSS00010 Marine Radio Operator's VHF and HF Skill Set
- MARSS00011 Marine Radio Operator's VHF Skill Set
- MARSS00012 Fast Rescue Craft Operations Skill Set
- MARSS00013 Cargo Handling Skill Set
- MARSS00014 Anchor Handling and Cargo Operations Skill Set
- MARSS00015 Marine Dogging and Rigging Skill Set
- MARSS00016 Tanker Familiarisation Skill Set
- MARSS00017 Coxswains Grade 1 Skill Set
- MARSS00018 Marine Dogging Skill Set
- MARSS00019 Marine Rigging Skill Set

Units of Competency in the MAR Maritime Training Package

The following units of competency are in the MAR Maritime Training Package:

MARA Handling Cargo and Vessel Stability

- MARA001 Contribute to safe cargo operations on liquefied gas tankers
- MARA002 Contribute to safe cargo operations on oil and chemical tankers
- MARA003 Manage loading, discharging and stowing of cargo
- MARA004 Manage vessel stability
- MARA005 Maintain vessel stability
- MARA006 Monitor loading, unloading and stowage of cargo
- MARA007 Contribute to safe cargo operations on offshore support vessels
- MARA008 Contribute to safe anchor handling and towing operations
- MARA009 Manage stability of a vessel 500 gross tonnage or more
- MARA010 Manage loading, unloading and stowage of cargo

MARB Equipment Checking and Maintenance

- MARB001 Assist with routine maintenance of a vessel
- MARB002 Perform basic servicing and maintenance of main propulsion unit and auxiliary systems
- MARB003 Service marine internal combustion engines and propulsion and auxiliary systems
- MARB004 Perform routine maintenance on a vessel up to 24 metres
- MARB005 Slip or dock a vessel and maintain hull on a vessel up to 80 metres
- MARB006 Maintain marine internal combustion engines, propulsion plant and auxiliary systems
- MARB007 Undertake basic maintenance of electrical systems
- MARB008 Carry out basic welding, brazing, cutting and machining operations on a coastal vessel
- MARB009 Manage refuelling
- MARB010 Plan and supervise routine maintenance on a vessel up to 80 metres
- MARB011 Undertake maintenance of 240 to 440 voltage alternating current electrical systems
- MARB012 Undertake maintenance of machinery, machinery systems and structural components
- MARB013 Maintain and repair marine electrical and electronic equipment
- MARB014 Maintain and repair shipboard machinery and equipment
- MARB015 Maintain firefighting appliances
- MARB016 Contribute to routine engine maintenance on a vessel
- MARB017 Perform routine maintenance and repairs on a vessel

- MARB018 Implement vessel planned maintenance system
- MARB019 Manage stores for planned maintenance system
- MARB020 Manage repairs and maintenance of a vessel 500 gross tonnage or more
- MARB021 Perform routine tasks in a marina
- MARB022 Refuel a vessel
- MARB023 Maintain marina infrastructure
- MARB024 Undertake basic boatyard operations
- MARB025 Maintain mooring equipment
- MARB026 Apply knowledge of marine terminology and port procedures

MARC Equipment Operations

- MARC001 Complete engine room tasks
- MARC002 Maintain hull out of water
- MARC003 Operate and maintain extra low and low voltage electrical systems and equipment
- MARC004 Operate deck machinery
- MARC005 Operate inboard and outboard motors
- MARC006 Operate main propulsion unit and auxiliary systems
- MARC007 Operate marine internal combustion engines, and propulsion and auxiliary systems
- MARC008 Manage fuel systems
- MARC009 Operate and monitor marine internal combustion engines, propulsion plant and auxiliary systems
- MARC010 Operate electrical systems
- MARC011 Manage a propulsion unit using appropriate engine systems and support services
- MARC012 Monitor and manage vessel operations
- MARC013 Operate auxiliary machinery systems up to 1500 kW
- MARC014 Operate deck machinery and steering gear on a vessel up to 80 metres
- MARC015 Operate marine internal combustion engines and associated systems up to 1500 kW
- MARC016 Operate propulsion transmission systems up to 1500 kW
- MARC017 Operate 240 to 440 voltage alternating current electrical systems
- MARC018 Employ tools, equipment and materials in a shipboard context
- MARC019 Transmit and receive information by marine VHF radio within Australian Territorial Waters
- MARC020 Transmit and receive information by marine radio
- MARC021 Transmit and receive information by marine VHF radio
- MARC022 Perform mooring and unmooring activities
- MARC023 Operate and maintain a boiler
- MARC024 Operate and maintain a steam engine up to 750 kW and steam auxiliary equipment
- MARC025 Operate and maintain engines for auxiliary systems other than steam auxiliary systems
- MARC026 Operate remote controls of propulsion plant and engineering systems
- MARC027 Contribute to the operation of engine equipment and associated propulsion plant
- MARC028 Operate deck machinery, cargo handling gear and equipment on a vessel
- MARC029 Perform rigging on board a vessel
- MARC030 Use and care for hand and power tools
- MARC031 Shift mooring lines using mechanical means
- MARC032 Perform dogging on board a vessel

MARD Administration and Human Resources

- MARD001 Manage business and administration on vessels limited by tonnage or near coastal operations
- MARD002 Manage operations and maintenance on vessels limited by tonnage or near coastal operations
- MARD003 Manage legal requirements of a vessel

MARE Communication

- MARE001 Communicate effectively when performing engineering duties
- MARE002 Communicate during mooring and unmooring activities

MARF Operational Quality and Safety

- MARF001 Apply basic survival skills in the event of vessel abandonment
- MARF002 Follow procedures to minimise and fight fires on board a vessel
- MARF003 Follow vessel security procedures
- MARF004 Meet work health and safety requirements
- MARF005 Survive at sea using survival craft
- MARF006 Observe personal safety and social responsibility
- MARF007 Operate survival craft and other lifesaving appliances
- MARF008 Prevent and fight fires on board a vessel
- MARF009 Survive at sea in the event of vessel abandonment
- MARF010 Work safely in confined spaces on a vessel
- MARF011 Manage firefighting and fire prevention activities on board a vessel
- MARF012 Control safe access to and on vessel
- MARF013 Provide medical first aid on board a vessel
- MARF014 Respond to emergencies
- MARF015 Manage provision of medical care on board a vessel
- MARF016 Carry out fast rescue craft operations
- MARF017 Follow work health and safety, and emergency procedures during mooring and unmooring activities
- MARF018 Assist in an emergency response
- MARF019 Operate emergency equipment and apply emergency procedures
- MARF020 Coordinate search and rescue operations
- MARF021 Manage safety and security of vessel crew and passengers
- MARF022 Apply maritime resource management principles
- MARF023 Apply safe work practices in a marina
- MARF024 Classify marina infrastructure, vessels and staffing structure
- MARF025 Respond to marina emergencies
- MARF026 Follow port and terminal security procedures

MARG Teamwork

- MARG001 Work effectively as part of a crew on a vessel up to 80 metres
- MARG002 Manage a small crew
- MARG003 Manage an engine room and small engineering team
- MARG004 Provide leadership to crew
- MARG005 Supervise a crew
- MARG006 Manage a vessel and its crew

MARH Navigation

- MARH001 Plan and navigate a passage for a vessel up to 12 metres
- MARH002 Apply weather information when navigating inland waters as Master
- MARH003 Manage and maintain a navigational watch on board vessels up to 80 metres
- MARH004 Plan and navigate a passage for a vessel up to 80 metres

- MARH005 Use wheelhouse equipment for safe navigation
- MARH006 Forecast weather and oceanographic conditions
- MARH007 Apply command navigation procedures on vessels limited by tonnage or near coastal operations
- MARH008 Plan and conduct a passage
- MARH009 Use an electronic chart display and information system to navigate safely
- MARH010 Use bridge equipment to determine vessel position
- MARH011 Forecast weather and oceanographic conditions to plan a safe passage
- MARH012 Manage the navigation of a vessel 500 gross tonnage or more

MARI Regulations and Port Operations

- MARI001 Comply with regulations to ensure safe operation of a vessel up to 12 metres
- MARI002 Observe regulations to ensure safe operation of a vessel up to 80 metres

MARJ Environment

- MARJ001 Follow environmental work practices
- MARJ002 Monitor environmental management on a vessel
- MARJ003 Ensure compliance with environmental management legislation
- MARJ004 Inspect and report defects and damage to vessel
- MARJ005 Manage compliance with environmental management legislation

MARK Manoeuvring Vessels

- MARK001 Handle a vessel up to 12 metres
- MARK002 Manoeuvre a vessel up to 24 metres within near coastal waters
- MARK003 Manoeuvre a vessel up to 80 metres
- MARK004 Perform basic vessel manoeuvres
- MARK005 Steer a vessel under direction of the Master
- MARK006 Manoeuvre a vessel 500 gross tonnage or more

MARL Marine Engineering

- MARL001 Carry out engineering calculations
- MARL002 Apply basic principles of naval architecture
- MARL003 Demonstrate basic knowledge of marine auxiliary boilers
- MARL004 Demonstrate basic knowledge of marine auxiliary machinery and equipment
- MARL005 Demonstrate basic knowledge of marine control systems and automation
- MARL006 Demonstrate basic knowledge of marine diesel engines and systems
- MARL007 Demonstrate basic knowledge of marine electrical systems
- MARL008 Demonstrate basic knowledge of ships and ship routines
- MARL009 Perform basic marine engineering calculations
- MARL010 Apply basic principles of marine electrotechnology
- MARL011 Apply basic principles of marine engineering thermodynamics
- MARL012 Apply basic principles of marine mechanics
- MARL013 Demonstrate basic knowledge of marine steam turbines and main boilers
- MARL014 Apply intermediate principles of marine electrotechnology
- MARL015 Apply intermediate principles of marine engineering thermodynamics
- MARL016 Apply intermediate principles of marine mechanics
- MARL017 Apply intermediate principles of naval architecture
- MARL018 Apply advanced principles of marine electrotechnology
- MARL019 Apply advanced principles of marine engineering

thermodynamics

- MARL020 Apply advanced principles of marine mechanics
- MARL021 Apply advanced principles of naval architecture
- MARL022 Demonstrate basic knowledge of ship construction
- MARL023 Demonstrate basic knowledge of ship operation and maintenance
- MARL024 Demonstrate intermediate knowledge of marine auxiliary boilers
- MARL025 Demonstrate intermediate knowledge of marine auxiliary machinery and systems
- MARL026 Demonstrate intermediate knowledge of marine control systems and automation
- MARL027 Demonstrate intermediate knowledge of marine diesel engines and systems
- MARL028 Demonstrate intermediate knowledge of marine electrical systems
- MARL029 Demonstrate intermediate knowledge of marine steam turbines and main boilers
- MARL030 Demonstrate advanced knowledge of marine auxiliary boilers
- MARL031 Demonstrate advanced knowledge of marine auxiliary machinery and systems
- MARL032 Demonstrate advanced knowledge of marine control systems and automation
- MARL033 Demonstrate advanced knowledge of marine diesel engines and systems
- MARL034 Demonstrate advanced knowledge of marine electrical systems
- MARL035 Demonstrate advanced knowledge of marine steam turbines and main boilers
- MARL036 Demonstrate advanced knowledge of ship operation and maintenance
- MARL037 Demonstrate knowledge of ships and ship routines

MARM Marine Surveying

- MARM001 Apply knowledge of safety management system legal framework in the workplace
- MARM002 Apply vessel construction theory to marine survey tasks
- MARM003 Identify factors that affect a commercial vessel's fitness for purpose
- MARM004 Work in the marine surveying sector
- MARM005 Assess compliance with marine environment protection requirements
- MARM006 Assist in the survey of commercial vessels
- MARM007 Assist in the survey of vessel mechanical features
- MARM008 Evaluate vessel stability
- MARM009 Implement a systematic approach to the audit of safety management systems
- MARM010 Survey lifesaving appliances, fire and other safety systems
- MARM011 Calculate, assess and report on vessel trim and stability
- MARM012 Conduct a range of surveys on domestic commercial vessels
- MARM013 Conduct an audit of safety management systems
- MARM014 Develop marine survey reports
- MARM015 Participate in investigating marine incidents
- MARM016 Survey hull and superstructure of a commercial vessel
- MARM017 Survey vessel operational systems
- MARM018 Undertake a periodic statutory survey
- MARM019 Establish a marine surveyor practice

MARN Seamanship

- MARN001 Apply general purpose hand skills aboard a vessel

	<ul style="list-style-type: none"> • MARN002 Apply seamanship skills aboard a vessel up to 12 metres • MARN003 Perform seamanship operations on board a vessel up to 24 metres • MARN004 Manage seaworthiness of a vessel up to 80 metres • MARN005 Maintain seaworthiness of a vessel • MARN006 Manage cargo operations • MARN007 Use seamanship skills on board a vessel <p>MARO Watchkeeping</p> <ul style="list-style-type: none"> • MARO001 Perform basic lookout duties • MARO002 Maintain a safe navigational watch • MARO003 Transmit and receive information by the global maritime distress and safety system • MARO004 Transmit and receive information by visual signalling • MARO005 Contribute to monitoring and controlling a safe engine watch • MARO006 Contribute to monitoring and controlling a safe navigational watch
Qualification mapping information	<p>The qualification mapping information maps the MAR Maritime Training Package qualifications to qualifications in the MAR13 Maritime Training Package and TDM07 Maritime Training Package where relevant.</p> <p>Attachment A: Qualification mapping</p>
Skill Sets mapping information	<p>The Skill Sets mapping information maps the MAR Maritime Training Package Skill Sets to Skill Sets in the:</p> <ul style="list-style-type: none"> • MAR13 Maritime Training Package. <p>Attachment B: Skill Sets mapping</p>
Unit of competency mapping information	<p>The unit of competency mapping information maps the MAR Maritime Training Package units of competency to units of competency in the:</p> <ul style="list-style-type: none"> • MAR13 Maritime Training Package • TDM07 Maritime Training Package. <p>Attachment C: Units of competency mapping</p>
Prerequisite and imported units	<p>There are no prerequisite units in the maritime specific units in the MAR Maritime Training Package. Where imported units have prerequisites these units have also been listed in the qualification packaging rules.</p> <p>The following units of competency have been imported into the MAR Maritime Training Package from another endorsed Training Package:</p> <ul style="list-style-type: none"> • AURREA2001 Apply environmental and sustainability best practice in a marine workplace • CHCCOM002 Use communication to build relationships • BSBADM307 Organise schedules • BSBCMM201 Communicate in the workplace • BSBCUS201 Deliver a service to customers • BSBFLM303 Contribute to effective workplace relationships • BSBINN201 Contribute to workplace innovation • BSBWHS401 Implement and monitor WHS policies, procedures and programs to meet legislative requirements • BSBWOR203 Work effectively with others • BSBWOR301 Organise personal work priorities and development

	<ul style="list-style-type: none"> • HLTAID003 Provide first aid • MEM11010B Operate mobile load shifting equipment • MEM50003B Follow work procedures to maintain the marine environment • MEM50004B Maintain quality of environment by following marina codes • MSAPMPER200C Work in accordance with an issued permit • MSAPMPER205C Enter confined space • PUALAW003B Give evidence in a judicial or quasi-judicial setting • PSPGOV314A Contribute to conflict management • PSPREG201A Carry out inspections and monitoring under guidance • PSPGOV417A Identify and treat risks • PSPGOV421A Exercise delegations • PSPREG401A Exercise regulatory powers • TAEASS402B Assess competence • TLID1001 Shift materials safely using manual handling methods • SITHCCC102 Prepare simple dishes • SITHCCC201 Produce dishes using basic methods of cookery • SITHCCC207 Use cookery skills effectively • SITHKOP101 Clean kitchen premises and equipment • SITXCCS303 Provide service to customers • SITXFSA101 Use hygienic practices for food safety • SITXINV202 Maintain the quality of perishable items • SITXINV401 Control stock • SITXWHS101 Participate in safe work practices
<p>Key work and training requirements in the industry</p>	<p>The maritime industry is a regulated environment. People with a MAR Maritime Training Package qualification and/or Skill Sets are well placed to work in the maritime industry as a seafarer, depending on the NSCV Part D certification requirements attached to the seafaring role in which they are interested.</p> <p>Work in the maritime industry spans a range of sectors that may require specific training and/or certification requirements such as cargo, passenger, policing, and search and rescue.</p>
<p>Regulation and licensing implications for implementation</p>	<p>The MAR Maritime Training Package has direct links to the National Standard for Commercial Vessels (NSCV). NSCV Part D is the prescribed standard in Marine Order 505 for crew competencies.</p> <p>The near coastal qualifications in the MAR Maritime Training Package are cited as meeting some of the certification requirements defined by NSCV Part D. Certification is the responsibility of the Australian Maritime Safety Authority (AMSA).</p> <p>For a qualification, skill set or unit of competency to be accepted for AMSA certification under NSCV Part D or Marine Order (MO) 506, the National law requires the RTO issuing the qualification, skill set or unit/s of competency to be approved by AMSA.</p> <p>Credit transfer cannot be provided for qualifications, skill sets or unit/s of competency issued by a non-approved AMSA RTO. However, evidence that the candidate has been assessed as competent via a challenge test or skills recognition carried out by an approved AMSA RTO would be accepted. People seeking certification should check with AMSA.</p> <p>The MAR Maritime Training Package also has direct links to the Standards of Training, Certification and Watchkeeping (STCW) which are reflected in Marine Orders 70-73 (2014) under the Navigation Act 2012 by the Australian Maritime Safety Authority (AMSA).</p> <p>If qualifications are cited as meeting some of the certification requirements</p>

defined by Marine Orders 70-73 this is noted in the qualification description (under licensing/regulatory information).

Attachment D: Summary of Qualification Licensing/Regulatory Information

IMPLEMENTATION INFORMATION

Key features of the Training Package and the industry that will impact on the selection of training pathways

Pathways define a path or sequence of learning or experience that can be followed to attain competency and describe the way in which training and assessment is undertaken in an education or training program. They are **not mandatory** and may vary depending on the qualification or training program, the needs of the individual and in the case of the maritime industry, AMSA requirements.

Industry sectors and occupational outcomes qualifications

- MAR10313 Certificate I in Maritime Operations (General Purpose Hand Near Coastal) is relevant for a certificate of competency for a General Purpose Hand Near Coastal
- MAR10413 Certificate I in Maritime Operations (Coxswain Grade 2 Near Coastal) is relevant for a certificate of competency for a Coxswain Grade 2 Near Coastal
- MAR20313 Certificate II in Maritime Operations (Coxswain Grade 1 Near Coastal) is relevant for a certificate of competency for a Coxswain Grade 1 Near Coastal
- MAR20413 Certificate II in Maritime Operations (Marine Engine Driver Grade 3 Near Coastal) is relevant for a certificate of competency for a Marine Engine Driver Grade 3 Near Coastal
- MAR30116 Certificate III in Maritime Operations (Integrated Rating) is relevant for a certificate of competency for an Integrated Rating
- MAR30813 Certificate III in Maritime Operations (Marine Engine Driver Grade 2 Near Coastal) is relevant for a certificate of competency for a Marine Engine Driver Grade 2 Near Coastal
- MAR30913 Certificate III in Maritime Operations (Master up to 24 metres Near Coastal) is relevant for a certificate of competency for a Master <24 metres Near Coastal
- MAR31013 Certificate III in Maritime Operations (Master Inland Waters) is relevant for a certificate of competency for a Master (Inland waters)
- MAR40513 Certificate IV in Maritime Operations (Marine Engine Driver Grade 1 Near Coastal) is relevant for a certificate of competency for a Marine Engine Driver Grade 1 Near Coastal
- MAR40116 Certificate IV in Maritime Operations (Chief Integrated Rating) is relevant for a certificate of competency for a Chief Integrated Rating
- MAR40613 Certificate IV in Maritime Operations (Master up to 35 metres Near Coastal) is relevant for a certificate of competency for a Master <35 metres Near Coastal and a Mate <80 metres Near Coastal
- MAR50613 Diploma of Maritime Operations (Marine Engineering Class 3 Near Coastal) is relevant for a certificate of competency for an Engineer Class 3 Near Coastal
- MAR50713 Diploma of Maritime Operations (Master up to 80

	<p>metres Near Coastal) is relevant for a certificate of competency for a Master <80 metres Near Coastal</p> <ul style="list-style-type: none"> • MAR30115 Certificate III in Maritime Operations (Marine Engine Driver Steam) is relevant to a Chief Engineer of a vessel that has steam as its main method of propulsion with propulsion power up to 750 kW within the exclusive economic zone (EEZ). • MAR30215 Certificate III in Maritime Operations (Marine Surveying) is relevant to someone who assists a marine surveyor or who undertakes administration duties. • MAR30315 Certificate III in Marina Operations is suitable for people working in the marina industry performing a range of tasks such as berthing, mooring and storage of vessels and a range of boatyard tasks connected to sailing, cruising and general boating. • MAR30415 Certificate III in Maritime Operations (Marine Cookery) is suitable for persons carrying out marine cook duties on a ship. • MAR40115 Certificate IV in Maritime Operations (Marine Surveying) is relevant to an assistant marine surveyor. • MAR50115 Diploma of Maritime Operations (Engineer Watchkeeper) is relevant to an Engineer Watchkeeper on a seagoing ship powered by main propulsion machinery of any propulsion power. • MAR50215 Diploma of Maritime Operations (Marine Surveying) is relevant to a domestic commercial vessel marine surveyor. • MAR50315 Diploma of Maritime Operations (Watchkeeper Deck) is relevant to the officer of the deck on a seagoing ship powered by main propulsion machinery of any propulsion power. • MAR50415 Diploma of Maritime Operations (Master up to 500GT) is relevant to a ship's master, chief mate or watchkeeper deck on seagoing ships of less than 500 gross tonnage (GT). • MAR60115 Advanced Diploma of Maritime Operations (Marine Engineering Class 2) is relevant to an Engineer Class 2 on ships powered by main propulsion machinery of any propulsion power. • MAR60215 Advanced Diploma of Maritime Operations (Marine Engineering Class 1) is relevant to an Engineer Class 1 on ships powered by main propulsion machinery of any propulsion power. • MAR60315 Advanced Diploma of Maritime Operations (Master Unlimited) is relevant to a ship's master on seagoing ships of any gross tonnage in any operating area.
<p>Mandatory entry requirements for qualifications (where applicable)</p>	<p>Entry requirements are the knowledge, skills or experience required to enter a qualification. They may be expressed as units of competency, qualifications or vocational experience and must be demonstrated prior to commencing the qualification.</p> <p>In the MAR Maritime Training Package the following entry requirements apply:</p> <ul style="list-style-type: none"> • MAR40613 Certificate IV in Maritime Operations (Master up to 35 metres Near Coastal) is an entry requirement for MAR50713 Diploma of Maritime Operations (Master up to 80 metres Near Coastal) • MAR50315 Diploma of Maritime Operations (Watchkeeper Deck) is an entry requirement for MAR50415 Diploma of Maritime Operations (Master up to 500 GT) and MAR60315 Advanced Diploma of Maritime Operations (Master Unlimited).
<p>Pathways advice</p>	<p>Pathways within the MAR Maritime Training Package and between the MAR Maritime Training Package and MAR13 Maritime Training</p>

	<p>Package are outlined in the pathways advice.</p> <p>Attachment E: MAR Maritime Training Package Pathways Advice</p> <p>All qualifications in the MAR Maritime Training Package are suitable for delivery via an Australian Apprenticeship pathway.</p> <p>The Australian Apprenticeships site (www.australianapprenticeships.gov.au) offers information about traineeships and apprenticeships and includes links to State and Territory Training Authorities (STAs) that monitor provision.</p> <p>The following qualifications have been identified as being suitable for VET in Schools:</p> <ul style="list-style-type: none"> • MAR10313 Certificate I in Maritime Operations (General Purpose Hand Near Coastal) • MAR10413 Certificate I in Maritime Operations (Coxswain Grade 2 Near Coastal) • MAR30315 Certificate III in Marina Operations. <p>VET in Schools programs are packaged and delivered in a variety of ways across Australia. However, it is highly recommended that schools work together in partnership with an RTO with the above qualifications on their scope of registration.</p> <p>Currently there are no credit transfer arrangements between qualifications in this Training Package and higher education qualifications.</p>
<p>Access and equity</p>	<p>Good vocational education and training, and assessment include making adjustments to meet the learning and assessment needs of individuals. An open mind, common sense and tailoring training and assessment to individual circumstances should ensure individuals achieve the standards employers and RTOs expect.</p> <p>Adjustments can be made to assist learners to access and participate in vocational education and training. Adjustments are reasonable if they achieve this purpose and take into account factors such as the nature of the learner’s ability and disability, the views of the learner, the potential effect of the adjustment on the learner and others, and the costs and benefits of making the adjustment.</p> <p>Reasonable adjustments need only be that – reasonable. It is about identifying what adjustments might reasonably be made and how they may be put into place.</p> <p>Assessment processes and techniques should be modified for distance-based learners, be culturally appropriate and suitable to the communication skill level, language, literacy and numeracy capacity of the candidate and the work being performed.</p> <p>An individual’s access to the assessment process should not be adversely affected by restrictions placed on the location or context of assessment.</p> <p>Assessment processes and techniques must be appropriate to the language, literacy and numeracy requirements of the work being performed and the needs of the candidate.</p>

<p>Foundation Skills</p>	<p>In the MAR Maritime Training Package, Foundation Skills encompass the language, literacy, numeracy and employment skills that are essential to performance and required in the workplace:</p> <ul style="list-style-type: none"> • language skills – where the focus is on vocabulary, comprehension, verbal communication • literacy skills – where the focus is on reading, writing • numeracy skills – where the focus is on mathematical calculations • employment skills – where the focus is on safety in the workplace and operational management requirements. <p>Foundation Skills essential to performance are explicit in the MAR Maritime Training Package units of competency and assessment requirements.</p> <p>Where foundation skills are explicit in the performance criteria, they are written in a way that reflects the context of the work environment.</p> <p>For example when a performance criteria states something is ‘reported to relevant personnel’ this may be reported in writing and involve literacy skills or it may be reported orally and involve language skills. The context will depend on the work environment in which it is applied.</p> <p>Foundation skills are also explicit in the assessment requirements and are written into the performance evidence. For example:</p> <ul style="list-style-type: none"> • ‘reading and interpreting written information’ involves literacy skills • ‘effective verbal, written and visual communication strategies’ involves language skills and literacy skills • ‘using calculators to perform calculations’ involves numeracy skills • ‘applying relevant work health and safety/occupational health and safety (WHS/OHS) requirements and work practices’ involves employment skills. <p>How well a learner responds to the Foundation Skills in a unit of competency will be specific to each learner.</p>
<p>Health and safety implications in the industry</p>	<p>Where necessary, work health and safety (WHS) requirements have been incorporated in units of competency.</p> <p>In jurisdictions where the National Model WHS Legislation has not been implemented RTOs are advised to contextualise the unit of competency by referring to the existing State/Territory occupational health and safety (OHS) legislative requirements.</p>
<p>Resources and equipment relevant to the Training Package</p>	<p>The Assessment Requirements (Assessment Conditions) refer to the relevant resources and equipment required for assessment.</p> <p>In particular, for assessment, access is required to:</p> <ul style="list-style-type: none"> • tools, equipment, machinery, materials and personal protective equipment currently used in industry • applicable documentation such as legislation, regulations, codes of practice, workplace procedures and operational manuals • a range of relevant exercises, case studies and/or simulations.
<p>Legal considerations for learners in the workplace/on placements</p>	<p>Legal requirements that apply to specific industries and VET vary across each state and territory, and the commonwealth, and can change.</p> <p>Contact relevant state/territory and commonwealth departments to determine specific legal requirements.</p>

Supporting learner transition between education sectors

The MAR10313 Certificate I in Maritime Operations (General Purpose Hand Near Coastal) and MAR10413 Certificate I in Maritime Operations (Coxswain Grade 2 Near Coastal) provide school leavers with an introduction to the Maritime Industry.

ATTACHMENT A: QUALIFICATION MAPPING

MAR Maritime Training Package Version 4.0

Key: E = equivalent, N = not equivalent, NA = not applicable

Equivalent means outcomes of old and new qualifications are equivalent.

TDM07 Maritime Training Package Version 1.0	MAR13 Maritime Training Package Version 1.0	MAR Maritime Training Package Version 4.0	Comment	E/N
TDM10207 Certificate I in Transport & Distribution (Maritime Operations - ShoreBased Linesperson)	MAR10213 Certificate I in Maritime Operations (Linesperson)	MAR20116 Certificate II in Maritime Operations (Linesperson)	Total number of units increased from seven to eleven. Current units modified to include skills required by linesperson working on a lines launch.	N
TDM30307 Certificate III in Transport & Distribution (Maritime Operations - Integrated Rating)	MAR30113 Certificate III in Maritime Operations (Integrated Rating)	MAR30116 Certificate III in Maritime Operations (Integrated Rating)	Total number of units increased from eighteen to twenty-two. Additional units included to cover the AMSA Certificate of Safety Training, dogging, rigging and hand and power tools.	N
NA	MAR40113 Certificate IV in Maritime Operations (Chief Integrated Rating)	MAR40116 Certificate IV in Maritime Operations (Chief Integrated Rating)	Total number of units increased from twenty-two to twenty-seven.	N

MAR Maritime Training Package Version 3.0

Key: E = equivalent, N = not equivalent, NA = not applicable

Equivalent means outcomes of old and new qualifications are equivalent.

TDM07 Maritime Training Package Version 1.0	MAR13 Maritime Training Package Version 1.0	MAR Maritime Training Package Version 3.0	Comment	E/N
NA	NA	MAR30315 Certificate III in Marina Operations	New Qualification	NA
NA	MAR30713 Certificate III in Maritime Operations (Marine Cookery)	MAR30415 Certificate III in Maritime Operations (Marine Cookery)	All imported units have been replaced with the most current unit. HLTAID003 Provide first aid has been included	E
TDM50307 Diploma of Transport Distribution (Maritime Operations – Deck Watchkeeper)	MAR50313 Diploma of Maritime Operations (Watchkeeper Deck).	MAR50315 Diploma of Maritime Operations (Watchkeeper Deck)	MARA3001A, MARA3002A and MARA5002A removed Three new units included MARA010, MARF022 and HLTAID003	E
NA	MAR50413 Diploma of Maritime Operations (Master up to 500 GT or Master 80 metres)	MAR50415 Diploma of Maritime Operations (Master up to 500 GT)	MARA3001A, MARA3002A and MARA5002A removed Two new units included MARA010 and HLTAID003 Total number of units increased from 28 to 29 MAR50413 Diploma of Maritime Operations (Master up to 500 GT or Master 80 metres) has been superseded by: <ul style="list-style-type: none"> MAR50713 Diploma of Maritime Operations (Master up to 80 metres Near Coastal) AND <ul style="list-style-type: none"> MAR50415 Diploma of Maritime Operations (Master up to 500 GT) 	E
TDM60407	MAR60213 Advanced	MAR60315 Advanced	MARA3001A and	E

Advanced Diploma of Transport Distribution (Marine Operations – Master Unlimited)	Diploma of Maritime Operations (Master Unlimited)	Diploma of Maritime Operations (Master Unlimited)	<p>MARA3002A removed</p> <p>Four new units included MARC026, MARF013, MARF022 and HLT AID003</p> <p>Total number of units increased from 26 to 28</p>	
---	---	---	---	--

MAR Maritime Training Package Version 2.0

Key: E = equivalent, N = not equivalent, NA = not applicable

Equivalent means outcomes of old and new qualifications are equivalent

TDM07 Maritime Training Package Version 1.0	MAR13 Maritime Training Package V1.0	MAR Maritime Training Package V2.0	Comment	E/N
NA	MAR30313 Certificate III in Maritime Operations (Marine Engine Driver Steam)	MAR30115 Certificate III in Maritime Operations (Marine Engine Driver Steam)	Updated to align with the Standards for Training Packages	E
NA	MAR30613 Certificate III in Maritime Operations (Marine Surveying)	MAR30215 Certificate III in Maritime Operations (Marine Surveying)	Updated to align with the Standards for Training Packages	E
NA	MAR40413 Certificate IV in Maritime Operations (Marine Surveying)	MAR40115 Certificate IV in Maritime Operations (Marine Surveying)	Updated to align with the Standards for Training Packages	E
TDM50207 Diploma of Transport Distribution (Marine Engineering – Engineer Watchkeeping)	MAR50213 Diploma of Maritime Operations (Engineer Watchkeeper) Equivalent to TDM50207	MAR50115 Diploma of Maritime Operations (Engineer Watchkeeper)	Updated to align with the Standards for Training Packages Packaging rules changed to a core plus elective model and total number of units increased from 17 to 22	N
NA	MAR50513 Diploma of Maritime Operations (Marine Surveying)	MAR50215 Diploma of Maritime Operations (Marine Surveying)	Updated to align with the Standards for Training Packages	E
TDM60307 Advanced Diploma of Transport Distribution (Marine Engineering Class 2)	MAR60113 Advanced Diploma of Maritime Operations (Marine Engineering Class 2)	MAR60115 Advanced Diploma of Maritime Operations (Marine Engineering Class 2)	Updated to align with the Standards for Training Packages Packaging rules changed to a core plus elective model	E
TDM60207 Advanced Diploma of Transport Distribution (Marine Engineering Class1)	MAR60313 Advanced Diploma of Maritime Operations (Marine Engineering Class1)	MAR60215 Advanced Diploma of Maritime Operations (Marine Engineering Class1)	Updated to align with the Standards for Training Packages Packaging rules changed to a core plus elective model	E

MAR Maritime Training Package Version 1.0

Key: E = equivalent, N = not equivalent, NA = not applicable

Equivalent means outcomes of old and new qualifications are equivalent

TDM07 Maritime Training Package Version 1.0	MAR13 Maritime Training Package Version 1.0	MAR Maritime Training Package Version 1.0	Comments
NA	MAR10113 Certificate I in Maritime Operations (General Purpose Hand)	MAR10313 Certificate I in Maritime Operations (General Purpose Hand Near Coastal)	E
NA	NA	MAR10413 Certificate I in Maritime Operations (Coxswain Grade 2 Near Coastal)	New
TDM20307 Certificate II in Transport Distribution (Coastal Maritime Operations – Coxswain)	MAR20113 Certificate II in Maritime Operations (Coxswain)	MAR20313 Certificate II in Maritime Operations (Coxswain Grade 1 Near Coastal)	E
TDM20207 Certificate II in Transport Distribution (Marine Engine Driving – Grade 3)	MAR20213 Certificate II in Maritime Operations (Marine Engine Driver Grade 3)	MAR20413 Certificate II in Maritime Operations (Marine Engine Driver Grade 3 Near Coastal)	E
TDM30207 Certificate III in Transport Distribution (Marine Engine Driving – Grade 2)	MAR30213 Certificate III in Maritime Operations (Marine Engine Driver Grade 2)	MAR30813 Certificate III in Maritime Operations (Marine Engine Driver Grade 2 Near Coastal)	E
TDM30407 Certificate III in Transport Distribution (Coastal Maritime Operations – Master Class 5)	MAR30413 Certificate III in Maritime Operations (Master up to 24 metres)	MAR30913 Certificate III in Maritime Operations (Master up to 24 metres Near Coastal)	E
NA	MAR30513 Certificate III in Maritime Operations (Master Inland Waters)	MAR31013 Certificate III in Maritime Operations (Master Inland Waters)	E
TDM40207 Certificate IV in Transport Distribution (Marine Engine Driving – Grade 1)	MAR40213 Certificate IV in Maritime Operations (Marine Engine Driver Grade 1)	MAR40513 Certificate IV in Maritime Operations (Marine Engine Driver Grade 1 Near Coastal)	E
TDM40307 Certificate IV in Transport Distribution (Coastal Maritime Operations – Master Class 4)	MAR40313 Certificate IV in Maritime Operations (Master up to 35 metres)	MAR40613 Certificate IV in Maritime Operations (Master up to 35 metres Near Coastal)	E
TDM50407 Diploma of Transport Distribution (Coastal Marine	MAR50113 Diploma of Maritime Operations (Marine Engineering	MAR50613 Diploma of Maritime Operations (Marine Engineering	E

Engineering – Engineer Class 3)	Class 3)	Class 3 Near Coastal)	
	NA	MAR50713 Diploma of Maritime Operations (Master up to 80 metres Near Coastal)	New

ATTACHMENT B: SKILL SETS MAPPING

MAR Maritime Training Package Version 4.0

NA = Not applicable

Equivalent means outcomes of old and new Skill Sets are equivalent.

TDM07 Maritime Training Package Version 1.0	MAR13 Maritime Training Package Version 1.0	MAR Maritime Training Package Version 4.0	Comments
NA	NA	MARSS00015 Marine Dogging and Rigging Skill Set	New Skill Set.
NA	NA	MARSS00016 Tanker Familiarisation Skill Set	New Skill Set.
NA	MARSS00001 Coxswains Grade 1 and Grade 2 Skill Set	MARSS00017 Coxswains Grade 1 Skill Set	E Aligned to the <i>Standards for Training Packages</i> , unit codes updated.
NA	NA	MARSS00018 Marine Dogging Skill Set	New Skill Set.
NA	NA	MARSS00019 Marine Rigging Skill Set	New Skill Set.

MAR Maritime Training Package Version 2.0

NA = Not applicable

Equivalent means outcomes of old and new Skill Sets are equivalent.

The following four Skill Sets have been added to the MAR Maritime Training Package Version 2.0.

MAR13 Maritime Training Package Version 1.0	MAR Maritime Training Package Version 1.0	MAR Maritime Training Package Version 2.0	Comments
NA	NA	MARSS00009 Australian Territorial Waters VHF Radio Operator's Skill Set	New
NA	NA	MARSS00010 Marine Radio Operator's VHF and HF Skill Set	New
NA	NA	MARSS00011 Marine Radio Operator's VHF Skill Set	New

NA	NA	MARSS00012 Fast Rescue Craft Operations Skill Set	New
NA	NA	MARSS00013 Cargo Handling Skill Set	New
NA	NA	MARSS00014 Anchor Handling and Cargo Operations Skill Set	New
MARSS00003 Shipboard Safety Skill Set	MARSS00008 Shipboard Safety Skill Set	MARSS00008 Shipboard Safety Skill Set	E - changes to description, target group and suggested words for statement of attainment

MAR Maritime Training Package Version 1.0

Key: E = equivalent, N = not equivalent, NA = not applicable

Equivalent means outcomes of old and new units are equivalent.

TDM07 Maritime Training Package Version 1.0	MAR13 Maritime Training Package Version 1.0	MAR Maritime Training Package Version 1.0	Comments
NA	NA	MARSS00004 Marine Emergency Care, Craft and Communication Skill Set	New
NA	NA	MARSS00005 Marine Engineering Class 3 Near Coastal Maintenance Skill Set	New
NA	NA	MARSS00006 Marine Engineering Class 3 Near Coastal Shipboard Safety Skill Set	New
NA	MARSS00002 Safety Training Certification Skill Set	MARSS00007 Safety Training Certification Skill Set	E
NA	MARSS00003 Shipboard Safety Skill Set	MARSS00008 Shipboard Safety Skill Set	E

ATTACHMENT C: UNITS OF COMPETENCY MAPPING

MAR Maritime Training Package Version 4.0

Key: E = equivalent, N = not equivalent, NA = not applicable

Equivalent means outcomes of old and new units are equivalent.

TDM07 Maritime Training Package Version 1.0	MAR13 Maritime Training Package Version 1.0	MAR Maritime Training Package Version 1.0	MAR Maritime Training Package Version 4.0	Comments E/N
TDMMR5407B Carry out refuelling and fuel transfer operations	MARB4003A Manage refuelling	MARB009 Manage refuelling	MARB009 Manage refuelling	E Correction to typographical error in Performance Criteria 2.9.
NA	MARB3002A Perform routine engine maintenance on a vessel	NA	MARB016 Contribute to routine engine maintenance on a vessel	E Title changed, additional information included in Knowledge Evidence (KE) and Application amended to place the emphasis on 'assist' and 'under the direction of the officer of the watch'.
NA	MARB3003A Perform routine maintenance and repairs on a vessel	NA	MARB017 Perform routine maintenance and repairs on a vessel	E KE and Performance Evidence (PE) amended to include use and maintenance of lifting gear, corrosion control and preventive measures.
NA	MARB4002A Implement vessel planned maintenance system	NA	MARB018 Implement vessel planned maintenance system	E Computer application and software included in PE and KE.
NA	MARB4004A Manage stores for planned maintenance system	NA	MARB019 Manage stores for planned maintenance system	E Computer application and software included in PE and KE.
NA	NA	NA	MARB025 Maintain mooring equipment	New unit
NA	NA	NA	MARB026 Apply knowledge of marine terminology and port procedures	New unit
TDMMR5607A Carry out shore-	MARC1001A Carry out shore-based	NA	MARC022 Perform mooring and	N

TDM07 Maritime Training Package Version 1.0	MAR13 Maritime Training Package Version 1.0	MAR Maritime Training Package Version 1.0	MAR Maritime Training Package Version 4.0	Comments E/N
based mooring and untying operations	mooring and untying operations		unmooring activities	Title changed, unit amended to include shore based and launch based mooring and unmooring activities. Additional Performance Criteria (PCs) added to Element 2 and 3. RoC, PE and KE amended to include relevant launch based activities.
NA	MARC3008A Operate engine equipment and associated propulsion plant	NA	MARC027 Contribute to the operation of engine equipment and associated propulsion plant	E KE and PE amended to include purpose and application of lock out tags, and rights and responsibility of individuals. Application amended to place the emphasis on 'assist' and 'under the direction of the officer of the watch'.
NA	MARC3006A Operate deck machinery, cargo handling gear and equipment on a vessel	NA	MARC028 Operate deck machinery, cargo handling gear and equipment on a vessel	N KE and PE amended to include: welding equipment and hazards safety, use and maintenance of lifting equipment. KE amended to include: replacing winch wire and attaching new wire to winch drum faulty and damaged wire and ropes and associated hazards. Components of tanker familiarisation included as additional PCs, KE and PE.
TDMMR3307B Perform rigging and lifting operations on board a vessel	NA	NA	MARC029 Perform rigging on board a vessel	E Aligned to the <i>Standards for Training Packages</i> .

TDM07 Maritime Training Package Version 1.0	MAR13 Maritime Training Package Version 1.0	MAR Maritime Training Package Version 1.0	MAR Maritime Training Package Version 4.0	Comments E/N
TDMMR4707B Use and care for hand and power tools	NA	NA	MARC030 Use and care for hand and power tools	E Aligned to the <i>Standards for Training Packages</i> .
NA	NA	NA	MARC031 Shift mooring lines using mechanical means	New unit
NA	NA	NA	MARC032 Perform dogging on board a vessel	New unit
TDMME907A Communicate during shore-based mooring and untying operations	MARE1001A Communicate during shore-based mooring and untying operations	NA	MARE002 Communicate during mooring and unmooring activities	E Title changed and unit amended to include both shore based and launch based mooring. VHF and non-verbal communication included in PCs, PE and KE.
NA	NA	MARF006 Observe personal safety and social responsibility	MARF006 Observe personal safety and social responsibility	E ISC upgrade – KE amended to better align with the STCW.
NA	NA	MARF007 Operate survival craft and other lifesaving appliances	MARF007 Operate survival craft and other lifesaving appliances	E ISC upgrade – KE amended to include awareness of MLC and International code of signals included in KE.
NA	NA	MARF008 Prevent and fight fires on board a vessel	MARF008 Prevent and fight fires on board a vessel	E ISC upgrade – KE amended to better align with the STCW and working effectively as part of a team included in KE and PE.
TDMMF6007A Follow OH&S and emergency procedures during shorebased mooring operations.	MARF1004A Follow work health and safety, and emergency procedures during shore-based mooring operations	NA	MARF017 Follow work health and safety, and emergency procedures during mooring and unmooring activities	E Title changed and unit amended to include both shore based and launch based mooring. Greater emphasis placed on individual differences, acceptable behaviour, rights and responsibilities of individuals. Safety drills, snap back zones

TDM07 Maritime Training Package Version 1.0	MAR13 Maritime Training Package Version 1.0	MAR Maritime Training Package Version 1.0	MAR Maritime Training Package Version 4.0	Comments E/N
				and testing of equipment included.
NA	MARF3001A Assist in an emergency response	NA	MARF018 Assist in an emergency response	E Element 1, PE and KE amended to include emergency response team (awareness and participation).
TDMMF2307B Operate emergency equipment and apply emergency procedures	MARF3003A Operate emergency equipment and apply emergency procedures	NA	MARF019 Operate emergency equipment and apply emergency procedures	Aligned to the <i>Standards for Training Packages</i> .
NA	NA	NA	MARF026 Follow port and terminal security procedures	New Unit.
NA	MARG4003A Supervise a crew	NA	MARG005 Supervise a crew	E Risk assessment, principles, analysis and treatments included as additional PCs in Element 1, PE and KE.
NA	NA	MARJ001 Follow environmental work practices	MARJ001 Follow environmental work practices	E ISC upgrade – Awareness of MARPOL and types of waste compactors and crushers suitable for use on board a vessel included in KE. Safety and hazard control procedures included in PE.
TDMMC1007C Steer a vessel under the direction of the master or officer in charge of the watch	MARK3002A Steer a vessel under direction of the Master	NA	MARK005 Steer a vessel under direction of the Master	E Aligned to the <i>Standards for Training Packages</i> .
NA	MARN3002A Use seamanship skills on board a vessel	NA	MARN007 Use seamanship skills on board a vessel	E PE and KE amended to include procedures for safe handling, stowage and securing of cargoes and stores, including dangerous, hazardous and harmful

TDM07 Maritime Training Package Version 1.0	MAR13 Maritime Training Package Version 1.0	MAR Maritime Training Package Version 1.0	MAR Maritime Training Package Version 4.0	Comments E/N
				<p>substances and liquids.</p> <p>KE amended to include:</p> <p>IMDG labelling working aloft.</p> <p>Element 5 'Rig and unrig safely' removed from unit.</p>
NA	MARO3001A Contribute to monitoring and controlling a safe engine watch	NA	MARO005 Contribute to monitoring and controlling a safe engine watch	<p>E</p> <p>Aligned to the <i>Standards for Training Packages</i>.</p> <p>Application amended to place the emphasis on 'assist' and 'under the direction of the officer of the watch'.</p>
NA	MARO3002A Contribute to monitoring and controlling a safe navigational watch	NA	MARO006 Contribute to monitoring and controlling a safe navigational watch	<p>E</p> <p>Aligned to the <i>Standards for Training Packages</i>.</p>

MAR Maritime Training Package Version 3.0

Key: E = equivalent, N = not equivalent, NA = not applicable

Equivalent means outcomes of old and new units are equivalent.

TDM07 Maritime Training Package Version 1.0	MAR13 Maritime Training Package Version 1.0	MAR Maritime Training Package Version 1.0	MAR Maritime Training Package Version 3.0	Comments Equivalent/not equivalent
TDMMA1007B Control trim, stability and stress	MARA6001A Manage stability of a vessel 500 gross tonnage or more	NA	MARA009 Manage stability of a vessel 500 gross tonnage or more	E
NA	NA	NA	MARA010 Manage loading, unloading and stowage of cargo	New Unit
TDMMB4307A Monitor and manage the seaworthiness of the vessel.	MARB6001A Manage repairs and maintenance of a vessel 500 gross tonnage or more	NA	MARB020 Manage repairs and maintenance of a vessel 500 gross tonnage or more	E
NA	NA	NA	MARB021 Perform routine tasks in a marina	New Unit
NA	NA	NA	MARB022 Refuel a vessel	New Unit
NA	NA	NA	MARB023 Maintain marina infrastructure	New Unit
NA	NA	NA	MARB024 Undertake basic boatyard operations	New Unit
TDMMC207B Operate remote controls of propulsion plant and engineering systems	NA	NA	MARC026 Operate remote controls of propulsion plant and engineering systems	E
TDMMF307B Manage business and legal requirements on a vessel	MARD6001A Manage legal requirements of a vessel	NA	MARD003 Manage legal requirements of a vessel	E
TDMMF107B Assist in search and rescue operations	MARF6001A Coordinate search and rescue operations	NA	MARF020 Coordinate search and rescue operations	E
NA	MARF6003A Manage safety and security of	NA	MARF021 Manage safety and security of	E

TDM07 Maritime Training Package Version 1.0	MAR13 Maritime Training Package Version 1.0	MAR Maritime Training Package Version 1.0	MAR Maritime Training Package Version 3.0	Comments Equivalent/not equivalent
	vessel crew and passengers		vessel crew and passengers	
			MARF023 Apply safe work practices in a marina	New Unit
			MARF024 Classify marina infrastructure, vessels and staffing structure	New Unit
			MARF025 Respond to marina emergencies	New Unit
TDMML407A Manage administration of the vessel and its personnel	MARG6001A Manage a vessel and its crew	NA	MARG006 Manage a vessel and its crew	E
TDMMH907B Forecast weather and oceanographic conditions	MARH6001A Forecast weather and oceanographic conditions to plan a safe passage	NA	MARH011 Forecast weather and oceanographic conditions to plan a safe passage	E
NA	MARH3003A Plan and navigate a passage for a vessel up to 80 metres	MARH004 Plan and navigate a passage for a vessel up to 80 metres	MARH004 Plan and navigate a passage for a vessel up to 80 metres	E- additional information re procedures to determine compass accuracy included in Knowledge Evidence
NA	MARH3004A Use wheelhouse equipment for safe navigation	MARH005 Use wheelhouse equipment for safe navigation	MARH005 Use wheelhouse equipment for safe navigation	E- additional information re procedures to determine compass accuracy included in Knowledge Evidence
NA	NA	MARH6002A Manage the navigation of a vessel 500 gross tonnage or more.	MARH012 Manage the navigation of a vessel 500 gross tonnage or more	E
	MARJ3001A Monitor environmental management on a vessel	MARJ002 Monitor environmental management on a vessel	MARJ002 Monitor environmental management on a vessel	E - additional job role included in Application
TDMMU107B Monitor	MARJ6001A Manage compliance	NA	MARJ005 Manage compliance with	E

TDM07 Maritime Training Package Version 1.0	MAR13 Maritime Training Package Version 1.0	MAR Maritime Training Package Version 1.0	MAR Maritime Training Package Version 3.0	Comments Equivalent/not equivalent
compliance with legislative requirements and measures to ensure protection of the environment	with environmental management legislation		environmental management legislation	
NA	MARK6001A Manoeuvre a vessel 500 gross tonnage or more	NA	MARK006 Manoeuvre a vessel 500 gross tonnage or more	E
NA	MARN6001A Manage cargo operations	NA	MARN006 Manage cargo operations	E

MAR Maritime Training Package Version 2.0

Key: E = equivalent, N = not equivalent, NA = not applicable

Equivalent means outcomes of old and new units are equivalent.

TDM07 Maritime Training Package Version 1.0	MAR13 Maritime Training Package Version 1.0	MAR Maritime Training Package Version 1.0	MAR Maritime Training Package Version 2.0	Comments Equivalent/not equivalent
NA	NA	NA	MARA007 Contribute to safe cargo operations on offshore support vessels	New unit
TDMMR5307B Carry out anchor handling, towage and supply duties at a rig	NA	NA	MARA008 Contribute to safe anchor handling and towing operations	E – unit has been developed to better address the current needs of the offshore sector of the maritime industry
NA	MARB3004A Perform routine engine maintenance on a vessel up to 24 metres	MARB004 Perform routine maintenance on a vessel up to 24 metres	MARB004 Perform routine maintenance on a vessel up to 24 metres	E- mapping information has been corrected
TDMMB2907B Recognise and correct deteriorated fittings and machinery	MARB3006A Maintain marine internal combustion engines, propulsion plant and auxiliary systems	MARB006 Maintain marine internal combustion engines, propulsion plant and auxiliary systems	MARB006 Maintain marine internal combustion engines, propulsion plant and auxiliary systems	E - PC 1.6 removed as it duplicated PC 1.1
NA	MARB3001A	NA	MARB015 Maintain	E

TDM07 Maritime Training Package Version 1.0	MAR13 Maritime Training Package Version 1.0	MAR Maritime Training Package Version 1.0	MAR Maritime Training Package Version 2.0	Comments Equivalent/not equivalent
	Maintain firefighting appliances		firefighting appliances	
NA	NA	NA	MARC019 Transmit and receive information by marine VHF radio within Australian Territorial Waters	New unit
TDMME507B Transmit and receive information by marine radio or telephone.	NA	NA	MARC020 Transmit and receive information by marine radio	E – unit has been developed to better address the requirements of the Radiocommunications Act 1992
TDMME1007A Transmit and receive information by marine VHF radio or telephone.	NA	NA	MARC021 Transmit and receive information by marine VHF radio	E – unit has been developed to better address the requirements of the Radiocommunications Act 1992
NA	MARC3002A Operate and maintain a boiler	NA	MARC023 Operate and maintain a boiler	E
NA	MARC3003A Operate and maintain a steam engine up to 750 kW and steam auxiliary equipment	NA	MARC024 Operate and maintain a steam engine up to 750 kW and steam auxiliary equipment	E
NA	MARC3004A Operate and maintain engines for auxiliary systems other than steam auxiliary systems	NA	MARC025 Operate and maintain engines for auxiliary systems other than steam auxiliary systems	E
NA	MARF1001A Apply basic survival skills in the event of vessel abandonment	MARF001 Apply basic survival skills in the event of vessel abandonment	MARF001 Apply basic survival skills in the event of vessel abandonment	E - additional information on safety included in KE and PE – RoC amended to better address NSCV requirements
NA	MARF1002A Follow procedures to minimise and fight fires on board a vessel	MARF002 Follow procedures to minimise and fight fires on board a vessel	MARF002 Follow procedures to minimise and fight fires on board a vessel	E - change to PE to specified the extinguishing agents that must be used
TDMMF5407A Observe safety	MARF1005A Meet work health and	MARF004 Meet work health and safety	MARF004 Meet work health and	E – change to KE to include SMS

TDM07 Maritime Training Package Version 1.0	MAR13 Maritime Training Package Version 1.0	MAR Maritime Training Package Version 1.0	MAR Maritime Training Package Version 2.0	Comments Equivalent/not equivalent
and emergency procedures on a coastal vessel	safety requirements	requirements	safety requirements	and National Law requirements for safety duties and change to confined space wording.
NA	MARF1006A Survive at sea using survival craft	MARF005 Survive at sea using survival craft	MARF005 Survive at sea using survival craft	E – PE amended to include additional activities to better reflect the PCs
TDMMF4307B Carry out fast rescue craft (FRC) operations	NA	NA	MARF016 Carry out fast rescue craft operations	E – unit has been developed to better address the current needs of fast rescue
NA	NA	NA	MARF022 Apply maritime resource management principles	New Unit
NA	MARK2001A Handle a vessel up to 12 metres	MARK001 Handle a vessel up to 12 metres	MARK001 Handle a vessel up to 12 metres	E – change to items in the RoC to 'include one or more of the following' and information on adverse weather conditions included in the KE
NA	MARL5001A Apply basic principles of marine electrotechnology	NA	MARL010 Apply basic principles of marine electrotechnology	E
NA	MARL5002A Apply basic principles of marine engineering thermodynamics	NA	MARL011 Apply basic principles of marine engineering thermodynamics	E
NA	MARL5003A Apply basic principles of marine mechanics	NA	MARL012 Apply basic principles of marine mechanics	E
NA	MARL5010A Demonstrate basic knowledge of marine steam turbines and main boilers	NA	MARL013 Demonstrate basic knowledge of marine steam turbines and main boilers	E
NA	MARL6001A Apply intermediate principles of marine	NA	MARL014 Apply intermediate principles of marine	E

TDM07 Maritime Training Package Version 1.0	MAR13 Maritime Training Package Version 1.0	MAR Maritime Training Package Version 1.0	MAR Maritime Training Package Version 2.0	Comments Equivalent/not equivalent
	electrotechnology		electrotechnology	
NA	MARL6002A Apply intermediate principles of marine engineering thermodynamics	NA	MARL015 Apply intermediate principles of marine engineering thermodynamics	E
NA	MARL6003A Apply intermediate principles of marine mechanics	NA	MARL016 Apply intermediate principles of marine mechanics	E
NA	MARL6004A Apply intermediate principles of naval architecture	NA	MARL017 Apply intermediate principles of naval architecture	E
NA	MARL6005A Apply advanced principles of marine electrotechnology	NA	MARL018 Apply advanced principles of marine electrotechnology	E
NA	MARL6006A Apply advanced principles of marine engineering thermodynamics	NA	MARL019 Apply advanced principles of marine engineering thermodynamics	E
NA	MARL6007A Apply advanced principles of marine mechanics	NA	MARL020 Apply advanced principles of marine mechanics	E
NA	MARL6008A Apply advanced principles of naval architecture	NA	MARL021 Apply advanced principles of naval architecture	E
NA	MARL6009A Demonstrate basic knowledge of ship construction	NA	MARL022 Demonstrate basic knowledge of ship construction	E
NA	MARL6010A Demonstrate basic knowledge of ship operation and maintenance	NA	MARL023 Demonstrate basic knowledge of ship operation and maintenance	E
NA	MARL6011A Demonstrate intermediate knowledge of marine auxiliary boilers	NA	MARL024 Demonstrate intermediate knowledge of marine auxiliary boilers	E

TDM07 Maritime Training Package Version 1.0	MAR13 Maritime Training Package Version 1.0	MAR Maritime Training Package Version 1.0	MAR Maritime Training Package Version 2.0	Comments Equivalent/not equivalent
NA	MARL6012A Demonstrate intermediate knowledge of marine auxiliary machinery and systems	NA	MARL025 Demonstrate intermediate knowledge of marine auxiliary machinery and systems	E
TDMMB4207A Test, detect faults and maintain and restore electronic control equipment to operating condition on vessels over 750 KW propulsion power	MARL6013A Demonstrate intermediate knowledge of marine control systems and automation	NA	MARL026 Demonstrate intermediate knowledge of marine control systems and automation	E
NA	MARL6014A Demonstrate intermediate knowledge of marine diesel engines and systems	NA	MARL027 Demonstrate intermediate knowledge of marine diesel engines and systems	E
NA	MARL6015A Demonstrate intermediate knowledge of marine electrical systems	NA	MARL028 Demonstrate intermediate knowledge of marine electrical systems	E
TDMMR5807A Manage the operation, monitoring and evaluation of the performance of steam propulsion plant on vessels over 750 KW propulsion power	MARL6016A Demonstrate intermediate knowledge of marine steam turbines and main boilers	NA	MARL029 Demonstrate intermediate knowledge of marine steam turbines and main boilers	E
NA	MARL6017A Demonstrate advanced knowledge of marine auxiliary boilers	NA	MARL030 Demonstrate advanced knowledge of marine auxiliary boilers	E
NA	MARL6018A Demonstrate	NA	MARL031 Demonstrate	E

TDM07 Maritime Training Package Version 1.0	MAR13 Maritime Training Package Version 1.0	MAR Maritime Training Package Version 1.0	MAR Maritime Training Package Version 2.0	Comments Equivalent/not equivalent
	advanced knowledge of marine auxiliary machinery and systems		advanced knowledge of marine auxiliary machinery and systems	
NA	MARL6019A Demonstrate advanced knowledge of marine control systems and automation	NA	MARL032 Demonstrate advanced knowledge of marine control systems and automation	E
NA	MARL6020A Demonstrate advanced knowledge of marine diesel engines and systems	NA	MARL033 Demonstrate advanced knowledge of marine diesel engines and systems	E
NA	MARL6021A Demonstrate advanced knowledge of marine electrical systems	NA	MARL034 Demonstrate advanced knowledge of marine electrical systems	E
TDMMR5707A Manage the operation, monitoring and evaluation of the performance of steam propulsion plant on vessels of unlimited propulsion power	MARL6022A Demonstrate advanced knowledge of marine steam turbines and main boilers	NA	MARL035 Demonstrate advanced knowledge of marine steam turbines and main boilers	E
NA	MARL6023A Demonstrate advanced knowledge of ship operation and maintenance	NA	MARL036 Demonstrate advanced knowledge of ship operation and maintenance	E
NA	NA	NA	MARL037 Demonstrate knowledge of ships and ship routines	New Unit
NA	MARM3001A Apply knowledge of safety management system legal framework in	NA	MARM001 Apply knowledge of safety management system legal	E

TDM07 Maritime Training Package Version 1.0	MAR13 Maritime Training Package Version 1.0	MAR Maritime Training Package Version 1.0	MAR Maritime Training Package Version 2.0	Comments Equivalent/not equivalent
	the workplace		framework in the workplace	
NA	MARM3002A Apply vessel construction theory to marine survey tasks	NA	MARM002 Apply vessel construction theory to marine survey tasks	E
NA	MARM3003A Identify factors that affect a commercial vessel's fitness for purpose	NA	MARM003 Identify factors that affect a commercial vessel's fitness for purpose	E
NA	MARM3004A Work in the marine surveying sector	NA	MARM004 Work in the marine surveying sector	E
NA	MARM4001A Assess compliance with marine environment protection requirements	NA	MARM005 Assess compliance with marine environment protection requirements	E
NA	MARM4002A Assist in the survey of commercial vessels	NA	MARM006 Assist in the survey of commercial vessels	E
NA	MARM4003A Assist in the survey of vessel mechanical features	NA	MARM007 Assist in the survey of vessel mechanical features	E
NA	MARM4004A Evaluate vessel stability	NA	MARM008 Evaluate vessel stability	E
NA	MARM4005A Implement a systematic approach to the audit of safety management systems	NA	MARM009 Implement a systematic approach to the audit of safety management systems	E
NA	MARM4006A Survey lifesaving appliances, fire and other safety systems	NA	MARM010 Survey lifesaving appliances, fire and other safety systems	E
NA	MARM5001A Calculate, assess and report on vessel trim and stability	NA	MARM011 Calculate, assess and report on vessel trim and stability	E

TDM07 Maritime Training Package Version 1.0	MAR13 Maritime Training Package Version 1.0	MAR Maritime Training Package Version 1.0	MAR Maritime Training Package Version 2.0	Comments Equivalent/not equivalent
NA	MARM5002A Conduct a range of surveys on domestic commercial vessels	NA	MARM012 Conduct a range of surveys on domestic commercial vessels	E
NA	MARM5003A Conduct an audit of safety management systems	NA	MARM013 Conduct an audit of safety management systems	E
NA	MARM5004A Develop marine survey reports	NA	MARM014 Develop marine survey reports	E
NA	MARM5005A Participate in investigating marine incidents	NA	MARM015 Participate in investigating marine incidents	E
NA	MARM5006A Survey hull and superstructure of a commercial vessel	NA	MARM016 Survey hull and superstructure of a commercial vessel	E
NA	MARM5007A Survey vessel operational systems	NA	MARM017 Survey vessel operational systems	E
NA	MARM5008A Undertake a periodic statutory survey	NA	MARM018 Undertake a periodic statutory survey	E
NA	MARM5009A Establish a marine surveyor practice	NA	MARM019 Establish a marine surveyor practice	E
TDMME807C Transmit and receive information by GDMSS subsystems and equipment	MARO5002A Transmit and receive information by the Global Maritime Distress and Safety System	MARO003 Transmit and receive information by the global maritime distress and safety system	MARO003 Transmit and receive information by the global maritime distress and safety system	E – change to RoC, PE and KE to include current terminology

MAR Maritime Training Package Version 1.1

TDM07/MAR13 Maritime Training Package Version 1.0	MAR Maritime Training Package Version 1.0	MAR Maritime Training Package Version 1.1	Comments
TDMMA1707A Determine the stability and trim of the vessel MARA5001A Maintain vessel stability	MARA005 Maintain vessel stability	MARA005 Maintain vessel stability	E
MARC3001A Manage fuel systems	MARC008 Manage fuel systems	MARC008 Manage fuel systems	E
TDMMR2707B Operate and maintain marine internal combustion engines within the limits of responsibility of a Marine Engine Driver Grade 2 MARC3005A Operate and monitor marine internal combustion engines, propulsion plant and auxiliary systems	MARC009 Operate and monitor marine internal combustion engines, propulsion plant and auxiliary systems	MARC009 Operate and monitor marine internal combustion engines, propulsion plant and auxiliary systems	E
TDMMR2907B Operate and maintain marine low and medium voltage electrical systems MARC3007A Operate electrical systems	MARC010 Operate electrical systems	MARC010 Operate electrical systems	E
TDMMC607B Manage a propulsion unit using the appropriate engine systems and support services MARC4001A Manage a propulsion unit using appropriate engine systems and support services	MARC011 Manage a propulsion unit using appropriate engine systems and support services	MARC011 Manage a propulsion unit using appropriate engine systems and support services	E
TDMMB3707B Fabricate simple shipboard components	MARC018 Employ tools, equipment and materials in a shipboard context	MARC018 Employ tools, equipment and materials in a shipboard context	E

TDM07/MAR13 Maritime Training Package Version 1.0	MAR Maritime Training Package Version 1.0	MAR Maritime Training Package Version 1.1	Comments
MARC5001A Employ tools, equipment and materials in a shipboard context			

MAR Maritime Training Package Version 1.0

TDM07 Maritime Training Package Version 1.0	MAR13 Maritime Training Package Version 1.0	MAR Maritime Training Package Version 1.0	Comments
NA	MARA3001A Contribute to safe cargo operations on liquefied gas tankers	MARA001 Contribute to safe cargo operations on liquefied gas tankers	E
NA	MARA3002A Contribute to safe cargo operations on oil and chemical tankers	MARA002 Contribute to safe cargo operations on oil and chemical tankers	E
TDMMA907B Prepare a cargo plan for cargo loading and unloading operations within limits of responsibility of a Master 4	MARA4001A Manage loading, discharging and stowing of cargo	MARA003 Manage loading, discharging and stowing of cargo	E
TDMMA1207B Manage stress and dynamic factors affecting a small vessel's stability	MARA4002A Manage vessel stability	MARA004 Manage vessel stability	E
TDMMA1707A Determine the stability and trim of the vessel	MARA5001A Maintain vessel stability	MARA005 Maintain vessel stability	E
NA MARA5002A	MARA5002A Monitor loading, unloading and stowage of cargo	MARA006 Monitor loading, unloading and stowage of cargo	E
NA	MARB1001A Assist with routine maintenance of a vessel	MARB001 Assist with routine maintenance of a vessel	E
NA	MARB2001A Perform basic servicing and maintenance of main propulsion unit and auxiliary systems	MARB002 Perform basic servicing and maintenance of main propulsion unit and auxiliary systems	E
NA	MARB2002A Service marine internal	MARB003 Service marine internal	E

TDM07 Maritime Training Package Version 1.0	MAR13 Maritime Training Package Version 1.0	MAR Maritime Training Package Version 1.0	Comments
	combustion engines and propulsion and auxiliary systems	combustion engines and propulsion and auxiliary systems	
NA	MARB3004A Perform routine maintenance on a vessel up to 24 metres	MARB004 Perform routine maintenance on a vessel up to 24 metres	E
TDMMB707B Slip vessel and maintain hull	MARB3005A Slip or dock a vessel and maintain hull on a vessel up to 80 metres	MARB005 Slip or dock a vessel and maintain hull on a vessel up to 80 metres	E
TDMMB2907B Recognise and correct deteriorated fittings and machinery	MARB3006A Maintain marine internal combustion engines, propulsion plant and auxiliary systems	MARB006 Maintain marine internal combustion engines, propulsion plant and auxiliary systems	E
NA	MARB3007A Undertake basic maintenance of electrical systems	MARB007 Undertake basic maintenance of electrical systems	E
TDMMR6207A Carry out basic welding, brazing, cutting and machining operations on a coastal vessel	MARB4001A Carry out basic welding, brazing, cutting and machining operations on a coastal vessel	MARB008 Carry out basic welding, brazing, cutting and machining operations on a coastal vessel	E
TDMMR5407B Carry out refuelling and fuel transfer operations	MARB4003A Manage refuelling	MARB009 Manage refuelling	E
NA	MARB4005A Plan and supervise routine maintenance on a vessel up to 80 metres	MARB010 Plan and supervise routine maintenance on a vessel up to 80 metres	E
NA	MARB4006A Undertake maintenance of 240 to 440 voltage alternating current electrical systems	MARB011 Undertake maintenance of 240 to 440 voltage alternating current electrical systems	E
NA	MARB4007A Undertake maintenance of machinery, machinery systems and structural components	MARB012 Undertake maintenance of machinery, machinery systems and structural components	E
NA	MARB5001A Maintain and repair marine electrical and	MARB013 Maintain and repair marine electrical and	E

TDM07 Maritime Training Package Version 1.0	MAR13 Maritime Training Package Version 1.0	MAR Maritime Training Package Version 1.0	Comments
	electronic equipment	electronic equipment	
NA	MARB5002A Maintain and repair shipboard machinery and equipment	MARB014 Maintain and repair shipboard machinery and equipment	E
NA	MARC2001A Complete engine room tasks	MARC001 Complete engine room tasks	E
TDMMB1907B Carry out basic hull servicing	MARC2002A Maintain hull out of water	MARC002 Maintain hull out of water	E
NA	MARC2003A Operate and maintain extra low and low voltage electrical systems and equipment	MARC003 Operate and maintain extra low and low voltage electrical systems and equipment	E
NA	MARC2004A Operate deck machinery	MARC004 Operate deck machinery	E
TDMMR3007B Operate and carry out basic service checks on small vessel marine propulsion systems	MARC2005A Operate inboard and outboard motors	MARC005 Operate inboard and outboard motors	E
NA	MARC2006A Operate main propulsion unit and auxiliary systems	MARC006 Operate main propulsion unit and auxiliary systems	E
NA	MARC2007A Operate marine internal combustion engines, and propulsion and auxiliary systems	MARC007 Operate marine internal combustion engines, and propulsion and auxiliary systems	E
NA	MARC3001A Manage fuel systems	MARC008 Manage fuel systems	E
TDMMR2707B Operate and maintain marine internal combustion engines within the limits of responsibility of a Marine Engine Driver Grade 2	MARC3005A Operate and monitor marine internal combustion engines, propulsion plant and auxiliary systems	MARC009 Operate and monitor marine internal combustion engines, propulsion plant and auxiliary systems	E
TDMMR2907B Operate and maintain marine low and medium voltage electrical systems	MARC3007A Operate electrical systems	MARC010 Operate electrical systems	E
TDMMC607B Manage a propulsion unit using	MARC4001A Manage a propulsion unit using	MARC011 Manage a propulsion unit using	E

TDM07 Maritime Training Package Version 1.0	MAR13 Maritime Training Package Version 1.0	MAR Maritime Training Package Version 1.0	Comments
the appropriate engine systems and support services	appropriate engine systems and support services	appropriate engine systems and support services	
NA	MARC4002A Monitor and manage vessel operations	MARC012 Monitor and manage vessel operations	E
NA	MARC4003A Operate auxiliary machinery systems up to 1500 kW	MARC013 Operate auxiliary machinery systems up to 1500 kW	E
NA	MARC4004A Operate deck machinery and steering gear on a vessel up to 80 metres	MARC014 Operate deck machinery and steering gear on a vessel up to 80 metres	E
NA	MARC4005A Operate marine internal combustion engines and associated systems up to 1500 kW	MARC015 Operate marine internal combustion engines and associated systems up to 1500 kW	E
NA	MARC4006A Operate propulsion transmission systems up to 1500 kW	MARC016 Operate propulsion transmission systems up to 1500 kW	E
NA	MARC4007A Operate 240 to 440 voltage alternating current electrical systems	MARC017 Operate 240 to 440 voltage alternating current electrical systems	E
TDMMB3707B Fabricate simple shipboard components	MARC5001A Employ tools, equipment and materials in a shipboard context	MARC018 Employ tools, equipment and materials in a shipboard context	E
TDMML507A Manage business and administration on vessels limited by tonnage or near coastal operations	MARD5001A Manage business and administration on vessels limited by tonnage or near coastal operations	MARD001 Manage business and administration on vessels limited by tonnage or near coastal operations	E
TDMMB4807A Manage the operations and maintenance on vessels limited by tonnage or near coastal operations	MARD5002A Manage operations and maintenance on vessels limited by tonnage or near coastal operations	MARD002 Manage operations and maintenance on vessels limited by tonnage or near coastal operations	E
TDMME707B Use English in written and oral form to perform	MARE5001A Communicate effectively when	MARE001 Communicate effectively when	E

TDM07 Maritime Training Package Version 1.0	MAR13 Maritime Training Package Version 1.0	MAR Maritime Training Package Version 1.0	Comments
engineering duties	performing engineering duties	performing engineering duties	
NA	MARF1001A Apply basic survival skills in the event of vessel abandonment	MARF001 Apply basic survival skills in the event of vessel abandonment	E
NA	MARF1002A Follow procedures to minimise and fight fires on board a vessel	MARF002 Follow procedures to minimise and fight fires on board a vessel	E
TDMMO107A Follow maritime security procedures	MARF1003A Follow vessel security procedures	MARF003 Follow vessel security procedures	E
TDMMF5407A Observe safety and emergency procedures on a coastal vessel	MARF1005A Meet work health and safety requirements	MARF004 Meet work health and safety requirements	E
NA	MARF1006A Survive at sea using survival craft	MARF005 Survive at sea using survival craft	E
TDMMF5607A Observe personal safety and social responsibilities	MARF3002A Observe personal safety and social responsibility	MARF006 Observe personal safety and social responsibility	E
TDMMF1907B Operate survival craft and other lifesaving appliances	MARF3004A Operate survival craft and other lifesaving appliances	MARF007 Operate survival craft and other lifesaving appliances	E
TDMMF6207A Prevent, control and fight fires on board an ocean-going vessel	MARF3005A Prevent and fight fires on board a vessel	MARF008 Prevent and fight fires on board a vessel	E
NA	MARF3006A Survive at sea in the event of vessel abandonment	MARF009 Survive at sea in the event of vessel abandonment	E
TDMMF5907A Work safely in enclosed spaces on a vessel	MARF3007A Work safely in confined spaces on a vessel	MARF010 Work safely in confined spaces on a vessel	E
TDMMF6107A Manage marine fire fighting and prevention activities on board a vessel	MARF4001A Manage firefighting and fire prevention activities on board a vessel	MARF011 Manage firefighting and fire prevention activities on board a vessel	E
TDMMF2107B Control safe access to and on vessel	MARF5001A Control safe access to and on vessel	MARF012 Control safe access to and on vessel	E

TDM07 Maritime Training Package Version 1.0	MAR13 Maritime Training Package Version 1.0	MAR Maritime Training Package Version 1.0	Comments
NA	MARF5002A Provide medical first aid on board a vessel	MARF013 Provide medical first aid on board a vessel	E
NA	MARF5003A Respond to emergencies	MARF014 Respond to emergencies	E
NA	MARF6002A Manage provision of medical care on board a vessel	MARF015 Manage provision of medical care on board a vessel	E
NA	MARG1001A Work effectively as part of a crew on a vessel up to 80 metres	MARG001 Work effectively as part of a crew on a vessel up to 80 metres	E
TDMME1107A Contribute to effective communications and teamwork on a coastal vessel	MARG4001A Manage a small crew	MARG002 Manage a small crew	E
NA	MARG4002A Manage an engine room and small engineering team	MARG003 Manage an engine room and small engineering team	E
TDMML307B Establish and maintain a harmonious workplace environment	MARG5001A Provide leadership to crew	MARG004 Provide leadership to crew	E
TDMMH1207B Plan and navigate a short voyage within inshore limits	MARH2001A Plan and navigate a passage for a vessel up to 12 metres	MARH001 Plan and navigate a passage for a vessel up to 12 metres	E
NA	MARH3001A Apply weather information when navigating inland waters as Master	MARH002 Apply weather information when navigating inland waters as Master	E
NA	MARH3002A Manage and maintain a navigational watch on board vessels up to 80 metres	MARH003 Manage and maintain a navigational watch on board vessels up to 80 metres	E
NA	MARH3003A Plan and navigate a passage for a vessel up to 80 metres	MARH004 Plan and navigate a passage for a vessel up to 80 metres	E
NA	MARH3004A Use wheelhouse equipment for safe navigation	MARH005 Use wheelhouse equipment for safe navigation	E
TDMMH707B Apply	MARH4001A Forecast	MARH006 Forecast	E

TDM07 Maritime Training Package Version 1.0	MAR13 Maritime Training Package Version 1.0	MAR Maritime Training Package Version 1.0	Comments
weather information when navigating a small vessel within limits of responsibility of a Master 4	weather and oceanographic conditions	weather and oceanographic conditions	
TDMMH1707A Apply command navigation procedures on vessels limited by tonnage or near coastal operations	MARH5001A Apply command navigation procedures on vessels limited by tonnage or near coastal operations	MARH007 Apply command navigation procedures on vessels limited by tonnage or near coastal operations	E
NA	MARH5002A Plan and conduct a passage	MARH008 Plan and conduct a passage	E
NA	MARH5003A Use an electronic chart display and information system to navigate safely	MARH009 Use an electronic chart display and information system to navigate safely	E
NA	MARH5004A Use bridge equipment to determine vessel position	MARH010 Use bridge equipment to determine vessel position	E
NA	MARI2001A Comply with regulations to ensure safe operation of a vessel up to 12 metres	MARI001 Comply with regulations to ensure safe operation of a vessel up to 12 metres	E
NA	MARI3001A Observe regulations to ensure safe operation of a vessel up to 80 metres	MARI002 Observe regulations to ensure safe operation of a vessel up to 80 metres	E
NA	MARJ2001A Follow environmental work practices	MARJ001 Follow environmental work practices	E
NA	MARJ3001A Monitor environmental management on a vessel	MARJ002 Monitor environmental management on a vessel	E
NA	MARJ5001A Ensure compliance with environmental management legislation	MARJ003 Ensure compliance with environmental management legislation	E
NA	MARJ5002A Inspect and report defects and damage to vessel	MARJ004 Inspect and report defects and damage to vessel	E
NA	MARK2001A Handle a	MARK001 Handle a	E

TDM07 Maritime Training Package Version 1.0	MAR13 Maritime Training Package Version 1.0	MAR Maritime Training Package Version 1.0	Comments
	vessel up to 12 metres	vessel up to 12 metres	
TDMMC807B Manoeuvre a vessel within the limits of responsibility of a Master 5	MARK3001A Manoeuvre a vessel up to 24 metres within near coastal waters	MARK002 Manoeuvre a vessel up to 24 metres within near coastal waters	E
TDMMC507B Manoeuvre a vessel within limits of responsibility of a Master 4	MARK4001A Manoeuvre a vessel up to 80 metres	MARK003 Manoeuvre a vessel up to 80 metres	E
NA	MARK5001A Perform basic vessel manoeuvres	MARK004 Perform basic vessel manoeuvres	E
NA	MARL4001A Carry out engineering calculations	MARL001 Carry out engineering calculations	E
NA	MARL5004A Apply basic principles of naval architecture	MARL002 Apply basic principles of naval architecture	E
NA	MARL5005A Demonstrate basic knowledge of marine auxiliary boilers	MARL003 Demonstrate basic knowledge of marine auxiliary boilers	E
NA	MARL5006A Demonstrate basic knowledge of marine auxiliary machinery and equipment	MARL004 Demonstrate basic knowledge of marine auxiliary machinery and equipment	E
NA	MARL5007A Demonstrate basic knowledge of marine control systems and automation	MARL005 Demonstrate basic knowledge of marine control systems and automation	E
NA	MARL5008A Demonstrate basic knowledge of marine diesel engines and systems	MARL006 Demonstrate basic knowledge of marine diesel engines and systems	E
NA	MARL5009A Demonstrate basic knowledge of marine electrical systems	MARL007 Demonstrate basic knowledge of marine electrical systems	E
NA	MARL5011A Demonstrate basic knowledge of ships	MARL008 Demonstrate basic knowledge of ships	E

TDM07 Maritime Training Package Version 1.0	MAR13 Maritime Training Package Version 1.0	MAR Maritime Training Package Version 1.0	Comments
	and ship routines	and ship routines	
NA	MARL5012A Perform basic marine engineering calculations	MARL009 Perform basic marine engineering calculations	E
NA	MARN1001A Apply general purpose hand skills aboard a vessel	MARN001 Apply general purpose hand skills aboard a vessel	E
NA	MARN2001A Apply seamanship skills aboard a vessel up to 12 metres	MARN002 Apply seamanship skills aboard a vessel up to 12 metres	E
NA	MARN3001A Perform seamanship operations on board a vessel up to 24 metres	MARN003 Perform seamanship operations on board a vessel up to 24 metres	E
TDMMB607B Monitor condition and seaworthiness of a coastal vessel up to 80 metres	MARN4001A Manage seaworthiness of a vessel up to 80 metres	MARN004 Manage seaworthiness of a vessel up to 80 metres	E
TDMMB4607A Apply information on vessel structure to maintenance and seaworthiness	MARN5001A Maintain seaworthiness of a vessel	MARN005 Maintain seaworthiness of a vessel	E
NA	MARO1001A Perform basic lookout duties	MARO001 Perform basic lookout duties	E
TDMMF3007B Maintain a safe navigational watch	MARO5001A Maintain a safe navigational watch	MARO002 Maintain a safe navigational watch	E
TDMME807C Transmit and receive information by GMDSS subsystems and equipment	MARO5002A Transmit and receive information by the Global Maritime Distress and Safety System	MARO003 Transmit and receive information by the global maritime distress and safety system	E
TDMME307B Transmit and receive information by visual signalling	MARO5003A Transmit and receive information by visual signalling	MARO004 Transmit and receive information by visual signalling	E

ATTACHMENT D: SUMMARY OF QUALIFICATION LICENSING/REGULATORY INFORMATION

MAR10313 Certificate I in Maritime Operations (General Purpose Hand Near Coastal) Licensing/Regulatory Information

This level of qualification is currently cited as meeting some of the requirements for certification as a General Purpose Hand Near Coastal as defined by the National Standard for Commercial Vessels (NSCV) Part D.

Certification will require achievement of the MAR10313 Certificate I in Maritime Operations (General Purpose Hand Near Coastal) and an Australian Maritime Safety Authority (AMSA) approved first aid certificate; people seeking certification should check with AMSA.

MAR10413 Certificate I in Maritime Operations (Coxswain Grade 2 Near Coastal) Licensing/Regulatory Information

This level of qualification is currently cited as meeting some of the requirements for certification as a Coxswain Grade 2 Near Coastal as defined by the National Standard for Commercial Vessels (NSCV) Part D.

Certification will require achievement of the MAR10413 Certificate I in Maritime Operations (Coxswain Grade 2 Near Coastal), qualifying sea service and completed Australian Maritime Safety Authority (AMSA) approved task book or qualifying sea service, and AMSA final assessment; people seeking certification should check with AMSA.

MAR20313 Certificate II in Maritime Operations (Coxswain Grade 1 Near Coastal) Licensing/Regulatory Information

This level of qualification is currently cited as meeting some of the requirements for certification as a Coxswain Grade 1 Near Coastal as defined by the National Standard for Commercial Vessels (NSCV) Part D.

Certification will require achievement of the MAR20313 Certificate II in Maritime Operations (Coxswain Grade 1 Near Coastal), qualifying sea service and completed Australian Maritime Safety Authority (AMSA) approved task book or qualifying sea service, AMSA final assessment, an appropriate radio certificate of proficiency and an AMSA approved first aid certificate; people seeking certification should check with AMSA.

MAR20413 Certificate II in Maritime Operations (Marine Engine Driver Grade 3 Near Coastal) Licensing/Regulatory Information

This level of qualification is currently cited as meeting some of the requirements for certification as a Marine Engine Driver Grade 3 Near Coastal as defined by the National Standard for Commercial Vessels (NSCV) Part D.

Certification will require achievement of the MAR20413 Certificate II in Maritime Operations (Marine Engine Driver Grade 3 Near Coastal), qualifying sea service and completed Australian Maritime Safety Authority (AMSA) approved task book or qualifying sea service or qualifying sea service and a workshop skill equivalent qualification, AMSA final assessment and an AMSA approved first aid certificate; people seeking certification should check with AMSA.

MAR30813 Certificate III in Maritime Operations (Marine Engine Driver Grade 2 Near Coastal) Licensing/Regulatory Information

This level of qualification is currently cited as meeting some of the requirements for certification as a Marine Engine Driver Grade 2 Near Coastal as defined by the National Standard for Commercial Vessels (NSCV) Part D.

Certification will require achievement of the MAR30813 Certificate III in Maritime Operations (Marine Engine Driver Grade 2 Near Coastal), qualifying sea service and completed Australian Maritime Safety Authority (AMSA) approved task book or qualifying sea service or qualifying sea service and a workshop skill equivalent qualification, AMSA final assessment and an AMSA approved first aid certificate; people seeking certification should check with AMSA.

MAR30415 Certificate III in Maritime Operations (Marine Cookery)

This qualification is currently cited as meeting some of the requirements for certification as a Marine Cook by the Australian Maritime Safety Authority (AMSA).

Certification will require the successful achievement of the MAR30415 Certificate III in Maritime Operations (Marine Cookery), the completion of the AMSA Basic Safety Training course (which includes Security Awareness Training) and hold the following valid certificates:

- Certificate of Safety Training, and
- AMSA Certificate of Medical Fitness.

People seeking certification should check with AMSA.

MAR40513 Certificate IV in Maritime Operations (Marine Engine Driver Grade 1 Near Coastal) Licensing/Regulatory Information

This level of qualification is currently cited as meeting some of the requirements for certification as a Marine Engine Driver Grade 1 Near Coastal as defined by the National Standard for Commercial Vessels (NSCV) Part D.

Certification will require achievement of the MAR40513 Certificate IV in Maritime Operations (Marine Engine Driver Grade 1 Near Coastal), qualifying sea service and completed Australian Maritime Safety Authority (AMSA) approved task book or qualifying sea service or qualifying sea service and a workshop skill equivalent qualification, AMSA final assessment and an AMSA approved first aid certificate; people seeking certification should check with AMSA.

MAR50613 Diploma of Maritime Operations (Marine Engineering Class 3 Near Coastal) Licensing/Regulatory Information

This level of qualification is currently cited as meeting some of the requirements for certification as an Engineer Class 3 Near Coastal as defined by the National Standard for Commercial Vessels (NSCV) Part D.

Certification will require achievement of the MAR50613 Diploma of Maritime Operations (Marine Engineering Class 3 Near Coastal), qualifying sea service and completed Australian Maritime Safety Authority (AMSA) approved task book or qualifying sea service or qualifying sea service and a workshop skill equivalent qualification, AMSA final assessment and an AMSA approved first aid certificate; people seeking certification should check with AMSA.

Certification will also require either MAR40513 Certificate IV in Maritime Operations (Marine Engine Driver Grade 1 Near Coastal) or a trade (as specified in NSCV Part D).

MAR30913 Certificate III in Maritime Operations (Master up to 24 metres Near Coastal) Licensing/Regulatory Information

This level of qualification is currently cited as meeting some of the requirements for certification as a Master up to 24 metres Near Coastal as defined by the National Standard for Commercial Vessels (NSCV) Part D.

Certification will require achievement of the MAR30913 Certificate III in Maritime Operations (Master up to 24 metres Near Coastal), qualifying sea service and completed Australian Maritime Safety Authority (AMSA) approved task book or qualifying sea service, an appropriate radio certificate of

proficiency, AMSA final assessment and an AMSA approved first aid certificate; people seeking certification should check with AMSA.

MAR31013 Certificate III in Maritime Operations (Master Inland Waters) Licensing/Regulatory Information

This level of qualification is currently cited as meeting some of the requirements for certification as a Master Inland Waters as defined by the National Standard for Commercial Vessels (NSCV) Part D.

Certification will require achievement of the MAR31013 Certificate III in Maritime Operations (Master Inland Waters), qualifying sea service and completed Australian Maritime Safety Authority (AMSA) approved task book or qualifying sea service, AMSA final assessment and an AMSA approved first aid certificate; people seeking certification should check with AMSA.

MAR40613 Certificate IV in Maritime Operations (Master up to 35 metres Near Coastal), Licensing/Regulatory Information

This level of qualification is currently cited as meeting some of the requirements for certification as a Master up to 35 metres Near Coastal as defined by the National Standard for Commercial Vessels (NSCV) Part D.

Certification as a Master less than 35 metres Near Coastal (as defined by the NSCV Part D) will require achievement of the MAR40613 Certificate IV in Maritime Operations (Master up to 35 metres Near Coastal), certification as a Master less than 24 metres Near Coastal, an appropriate radio certificate of proficiency, AMSA final assessment and an AMSA approved first aid certificate; people seeking certification should check with the Australian Maritime Safety Authority (AMSA).

This level of qualification is also currently cited as meeting some of the requirements for certification as a Mate less than 80 metres Near Coastal as defined by the NSCV Part D.

Certification as a Mate less than 80 metres Near Coastal will require achievement of the MAR40613 Certificate IV in Maritime Operations (Master up to 35 metres Near Coastal), qualifying sea service and completed AMSA approved task book or qualifying sea service, an appropriate radio certificate of proficiency, AMSA final assessment and an AMSA approved first aid certificate; people seeking certification should check with AMSA.

MAR50713 Diploma of Maritime Operations (Master up to 80 metres Near Coastal) Licensing/Regulatory Information

This level of qualification is currently cited as meeting some of the requirements for certification as a Master up to 80 metres Near Coastal as defined by the National Standard for Commercial Vessels (NSCV) Part D.

Certification will require achievement of the MAR50713 Diploma of Maritime Operations (Master up to 80 metres Near Coastal), certification as a Master less than 35 metres Near Coastal, qualifying sea service and completed Australian Maritime Safety Authority (AMSA) approved task book or qualifying sea service, AMSA final assessment, an appropriate radio certificate of proficiency and an AMSA approved first aid certificate; people seeking certification should check with AMSA.

MAR30115 Certificate III in Maritime Operations (Marine Engine Driver Steam)

This qualification is currently cited as meeting some of the requirements for certification as a Marine Engine Driver (Steam) by the Australian Maritime Safety Authority (AMSA).

Certification will require achievement of other requirements; people seeking certification should check with AMSA.

MAR30215 Certificate III in Maritime Operations (Marine Surveying)

This qualification is currently cited as meeting some of the requirements for accreditation as a statutory marine surveyor of domestic commercial vessels by the Australian Maritime Safety Authority

(AMSA). Accreditation will require achievement of other requirements, people seeking accreditation should check with AMSA.

MAR40115 Certificate IV in Maritime Operations (Marine Surveying)

This qualification is currently cited as meeting some of the requirements for accreditation as a statutory marine surveyor of domestic commercial vessels by the Australian Maritime Safety Authority (AMSA). Accreditation will require achievement of other requirements, people seeking accreditation should check with AMSA.

MAR50115 Diploma of Maritime Operations (Engineer Watchkeeper)

This qualification is currently cited as meeting some of the requirements for certification as an Engineer Watchkeeper by the Australian Maritime Safety Authority (AMSA). People seeking certification should check requirements with AMSA.

MAR50215 Diploma of Maritime Operations (Marine Surveying)

This qualification is currently cited as meeting some of the requirements for accreditation as a surveyor of domestic commercial vessels by the Australian Maritime Safety Authority (AMSA).

Accreditation will require achievement of other requirements; people seeking accreditation should check with AMSA.

MAR50315 Diploma of Maritime Operations (Watchkeeper Deck)

This qualification meets some of the requirements for the certification as a Watchkeeper (Deck) as described in Marine Orders 70 and 71 (2014) under the Navigation Act 2012 by the Australian Maritime Safety Authority (AMSA). People seeking certification should check the requirements with AMSA.

MAR50415 Diploma of Maritime Operations (Master up to 500GT)

This qualification meets some of the requirements for certification as a Master <500 GT as described in Marine Order 70 and 71 (2014) under the Navigation Act 2012 by the Australian Maritime Safety Authority (AMSA). People seeking certification should check with AMSA.

MAR60115 Advanced Diploma of Maritime Operations (Marine Engineering Class 2)

This qualification forms some of the requirements for certification as an Engineer Class 2 as described in Marine Orders 70-73 (2014): under the Navigation Act 2012 by the Australian Maritime Safety Authority (AMSA). People seeking certification should check requirements with AMSA.

MAR60215 Advanced Diploma of Maritime Operations (Marine Engineering Class 1)

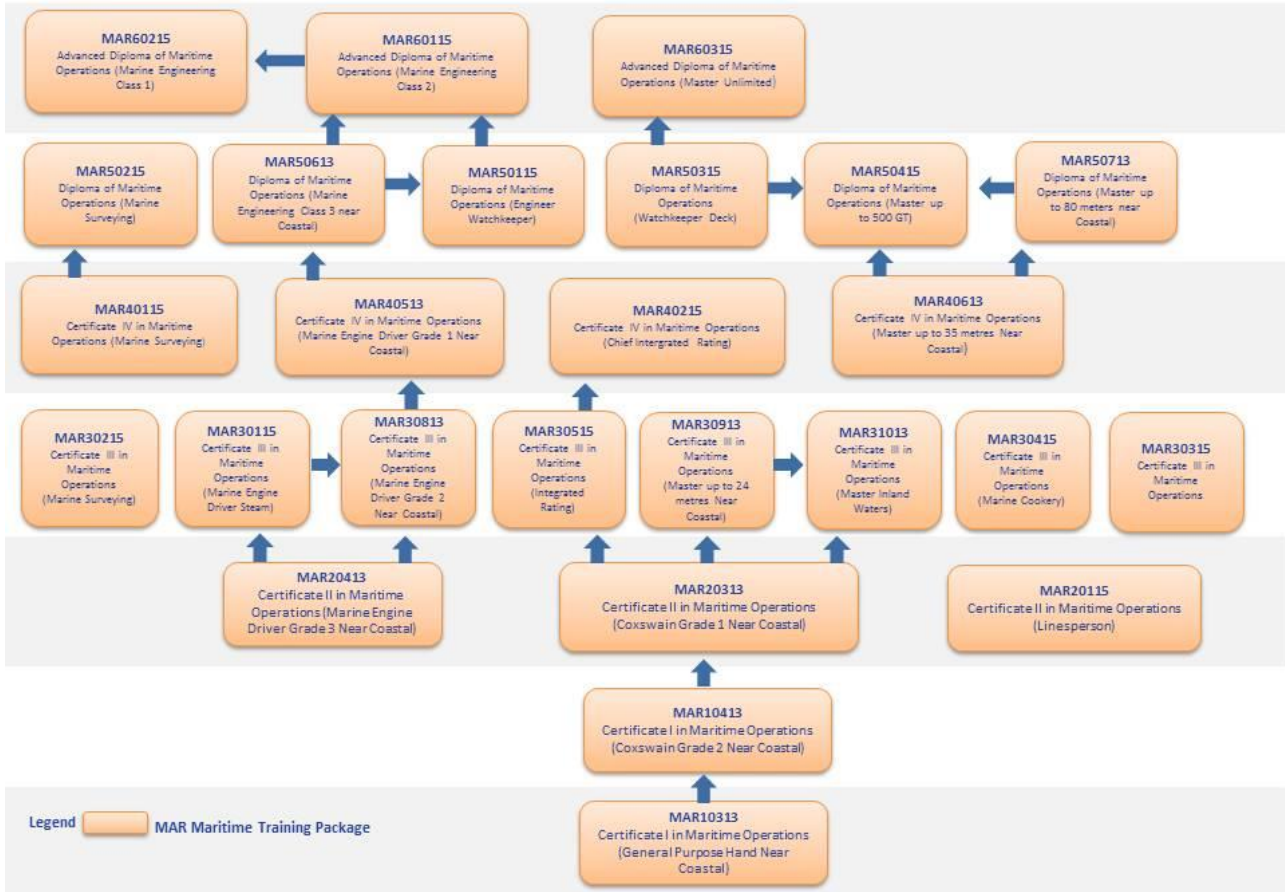
This qualification forms some of the requirements for certification as an Engineer Class 1 as described in Marine Orders 70-73 (2014): under the Navigation Act 2012 by the Australian Maritime Safety Authority (AMSA). People seeking certification should check requirements with AMSA.

MAR60315 Advanced Diploma of Maritime Operations (Master Unlimited)

This qualification meets some of the requirements for certification as a Master (Unlimited) as described in Marine Orders 70 and 71(2014) under the Navigation Act 2012 by the Australian Maritime Safety Authority (AMSA). People seeking certification should check with AMSA.

ATTACHMENT E: MAR Maritime Training Package Pathways Advice

MAR Maritime Training Packages – Qualification Pathways



ATTACHMENT F: CVIG Assurance Process

This Companion Volume Implementation Guide (CVIG) is initiated in accordance with the requirements of the NSSC *Standards for Training Packages*.

The steps in the quality assurance (QA) process as they apply to the CVIG are:

1. The CVIG is developed by the Training Package Specialists (TPS) in accordance with Standards 11 and 12 of the *Standards for Training Packages* and conform to the CVIG template.
 - **Standard 11:** A quality assured companion volume implementation guide produced by the Training Package developer is available at the time of endorsement and complies with the companion volume implementation guide template.
 - **Standard 12:** Training Package developers produce other quality assured companion volumes to meet the needs of their stakeholders as required.
2. Content is validated and amended as part of the validation stage in the implementation of the Standards.
3. Amendments are made as required and the CVIG is submitted for external QA with the Training Package changes to ensure it is available at the time of endorsement.
4. As the implementation of the Standards continue, the CVIG is reviewed by the TPS to ensure mapping tables are updated and any additional information is added as required. Proposed changes are subject to industry validation as part of the endorsement process.
5. Where changes are made to a Training Package and minor amendments are required for the CVIG, the TPS includes amendments as part of the validation phase and incorporates the reference in the version control, modification history at the front of the CVIG and the mapping table.

ATTACHMENT G: CVIG TEMPLATE

COMPANION VOLUME IMPLEMENTATION GUIDE FOR (insert Training Package Code and Title) Mandatory field	
OVERVIEW INFORMATION Mandatory field	<ul style="list-style-type: none"> • Version control and modification history. • List of AQF qualifications, Skill Sets and units of competency in the Training Package. • Unit mapping information, including equivalence table linking old to new units of competency. • Qualification mapping information, including equivalence table linking old to new qualification. • List of imported and prerequisite units in the Training Package. • Key work and training requirements in the industry. • Regulation and licensing implications for implementation.
IMPLEMENTATION INFORMATION Mandatory field	<ul style="list-style-type: none"> • Information on the key features of the Training Package and the industry that will impact on the selection of training pathways. • Industry sectors and occupational outcomes of qualifications. • Explanation of any mandatory entry requirements for qualifications. • Pathways advice, particularly in line with requirements of the AQF Pathways Policy. • Access and equity considerations. • Foundation Skills. • Advice on any health and safety implications in the industry. • Resource and equipment lists relevant to the Training Package. • Legal considerations for learners in the workplace/on placements. • Other information relevant to implementation of the Training Package.
LINKS Optional field	<ul style="list-style-type: none"> • Resources supporting the companion volume implementation guide. • Other companion volumes as required including: <ul style="list-style-type: none"> ○ Learning strategies guidance, describing the diversity of learners and learning strategies. ○ Knowledge guidance, identifying contextual information such as knowledge requirements and resources. ○ Assessment strategies, providing guidance on implementation of assessment requirements. • Training Package developer's quality assurance process for companion volumes.